

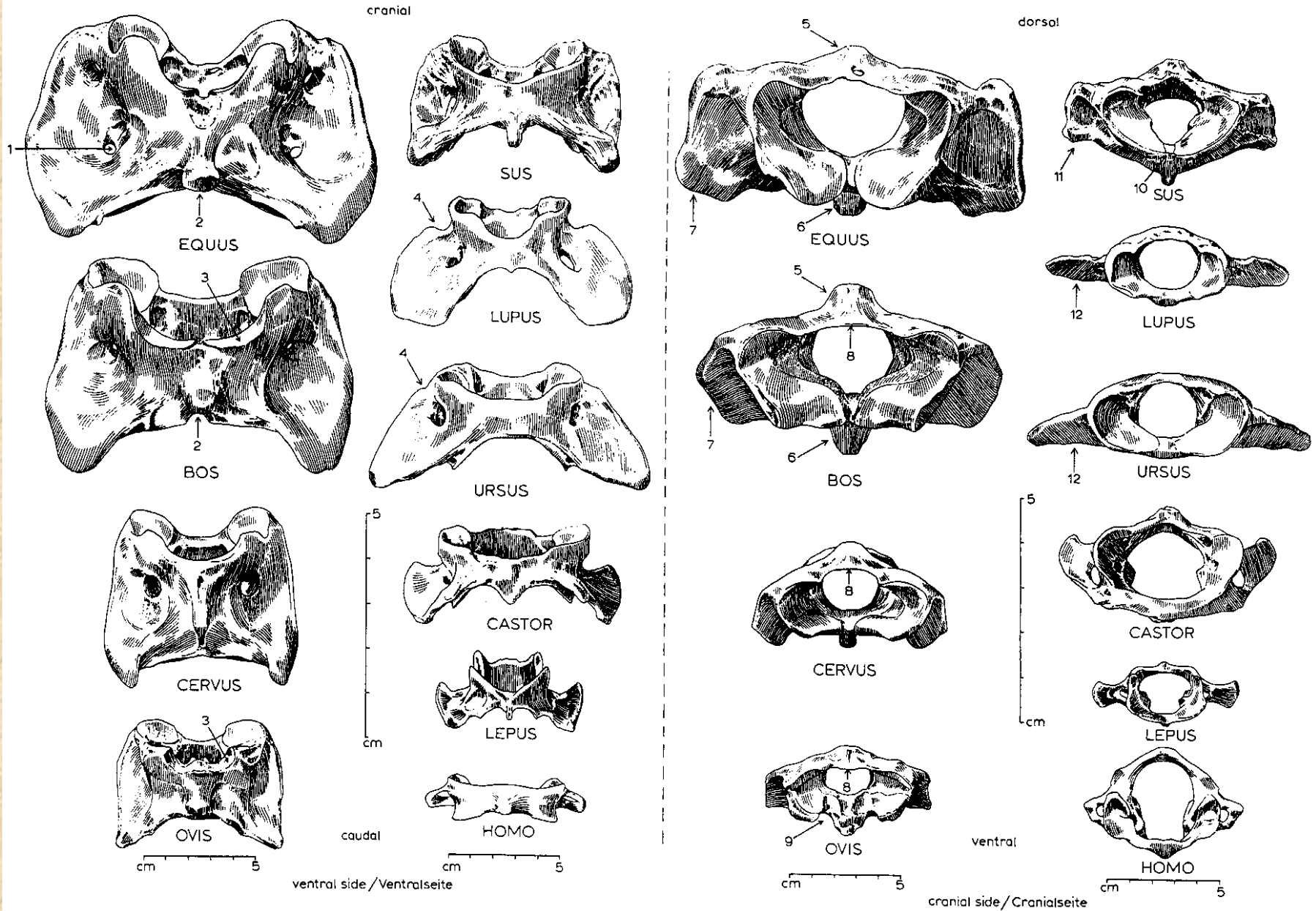
Základy osteologie

Obratle, žebra a kosti přední končetiny



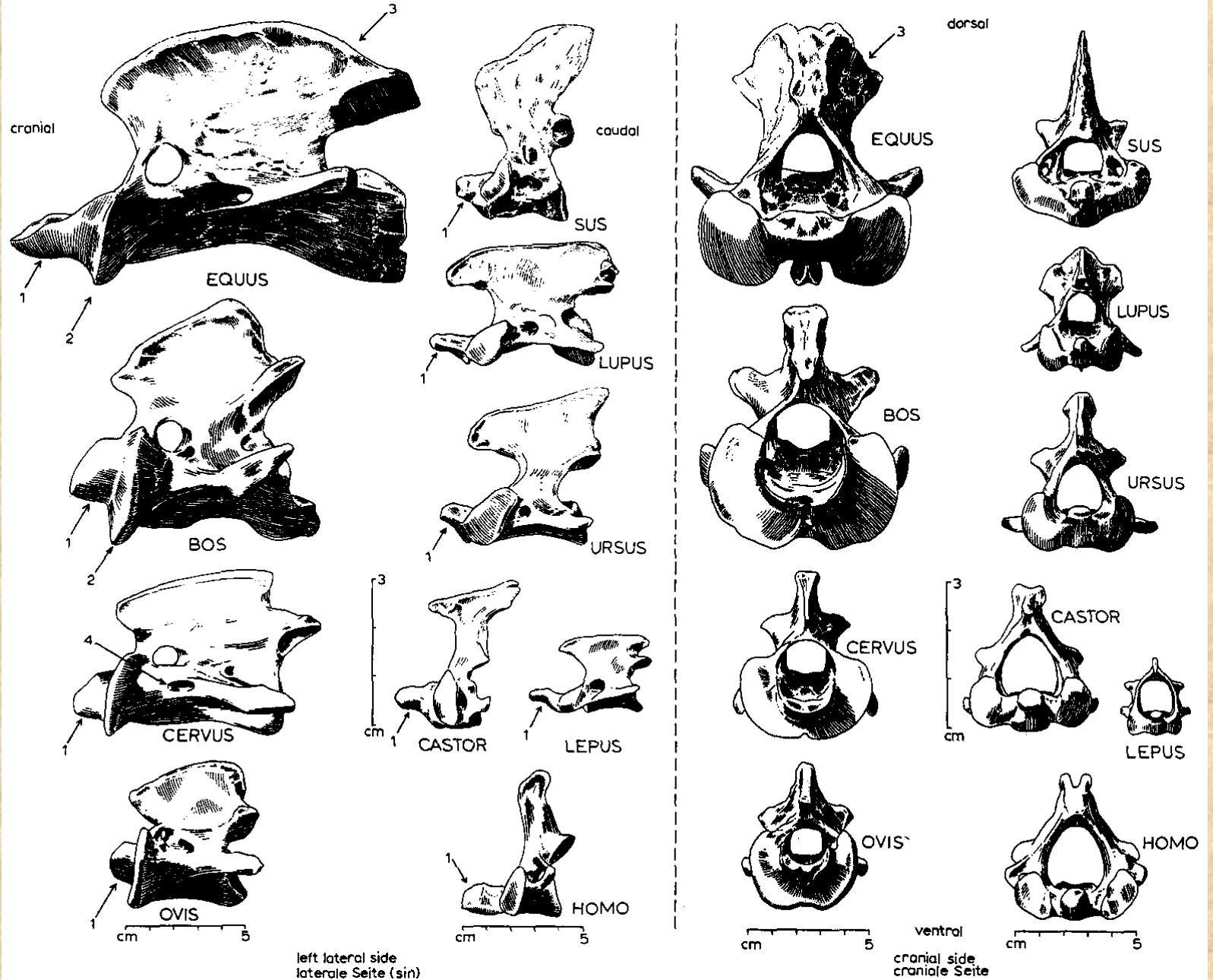
Obratle a žebra

Atlas (nosič)

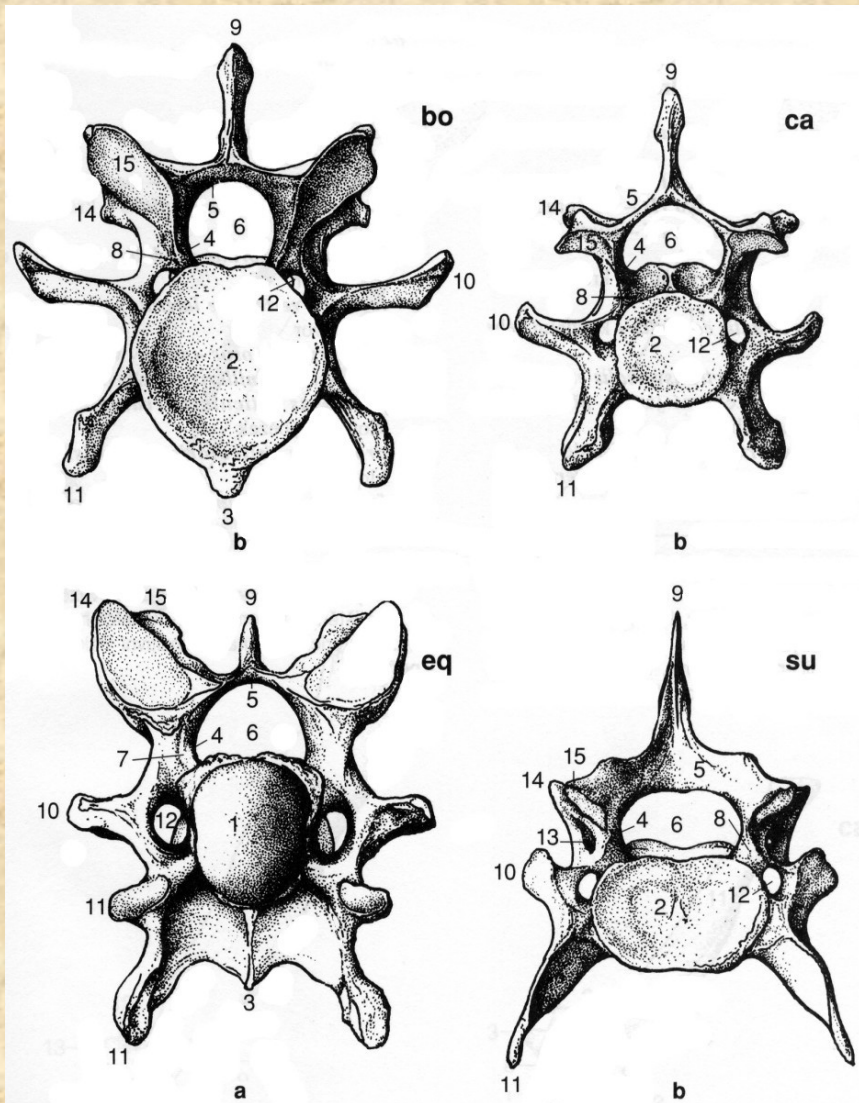


Obratle a žebra

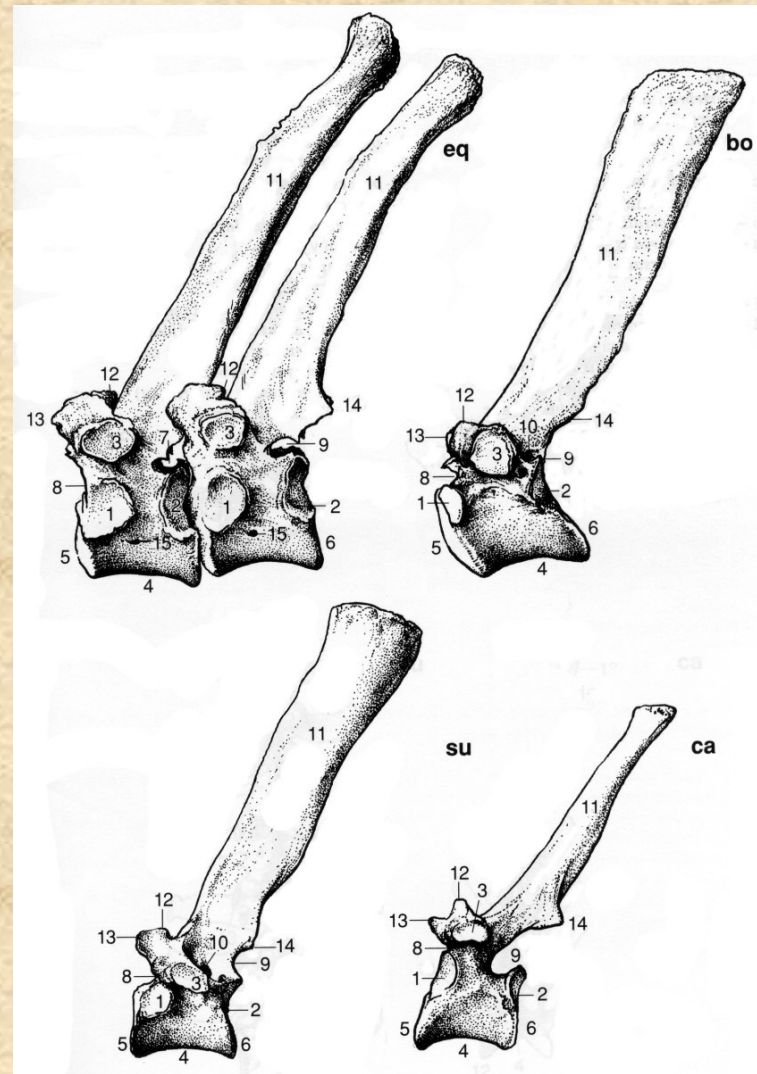
Epistrofeus (čepovec)



Obratle a žebra

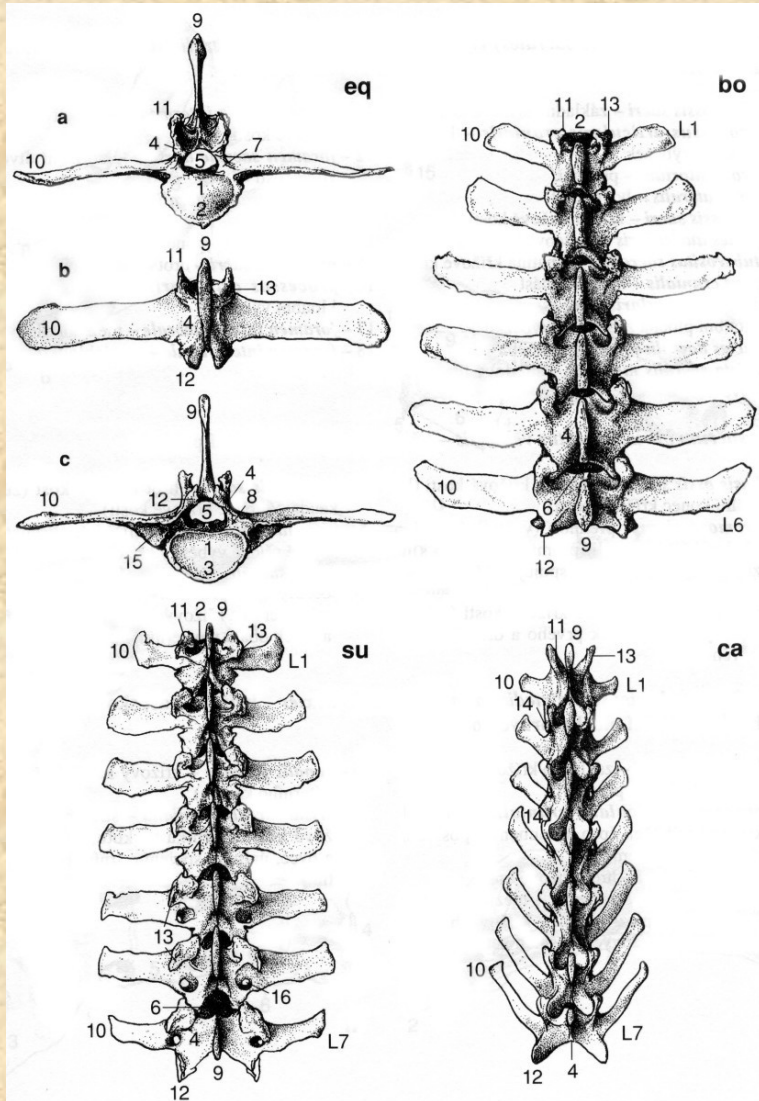


Krční obratle (*vertebra cervicis*)

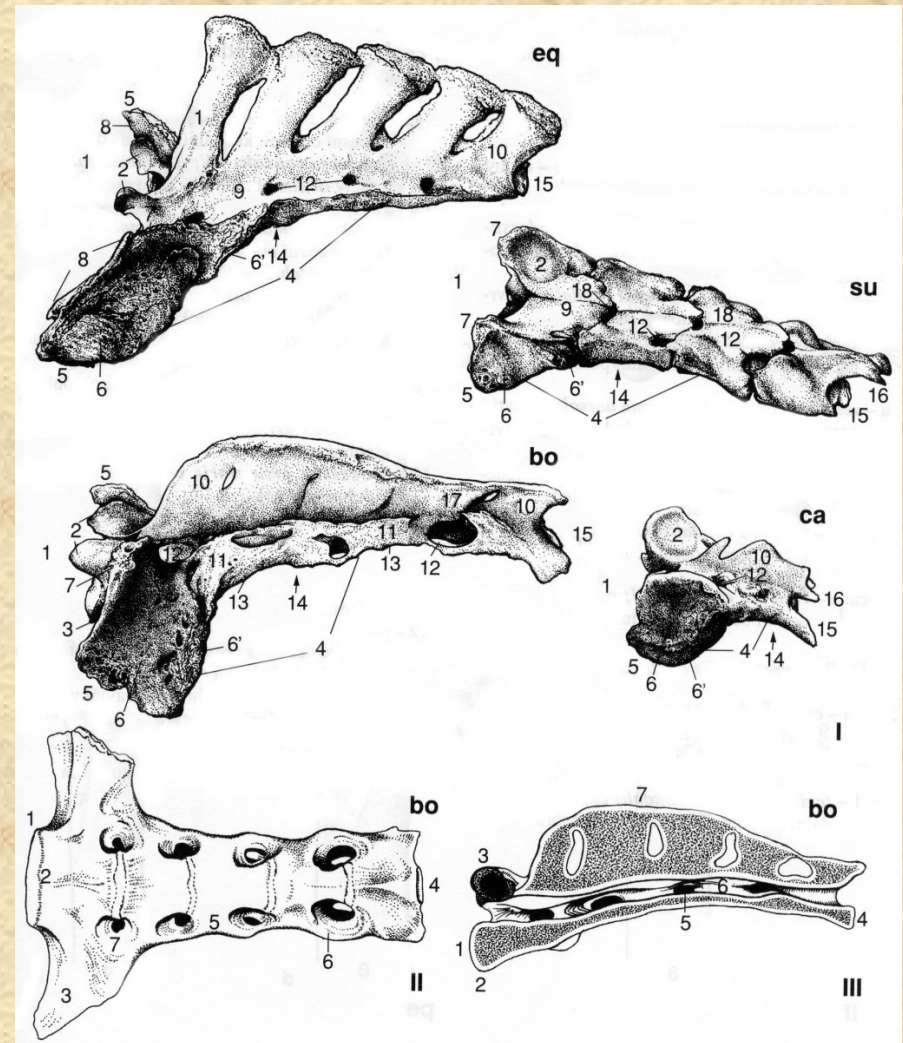


Hrudní obratle (*vertebrae thoracicae*)

Obratle a žebra

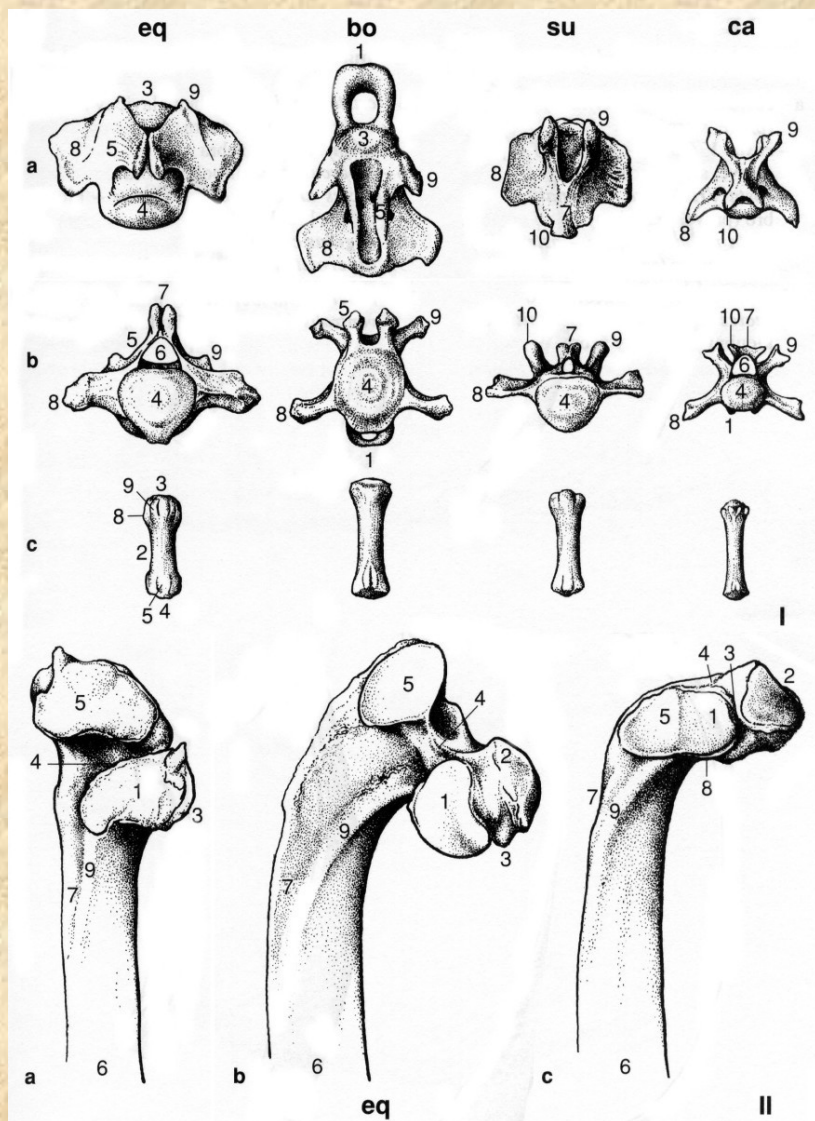


Bederní obratle (*vertebrae lumbales*)

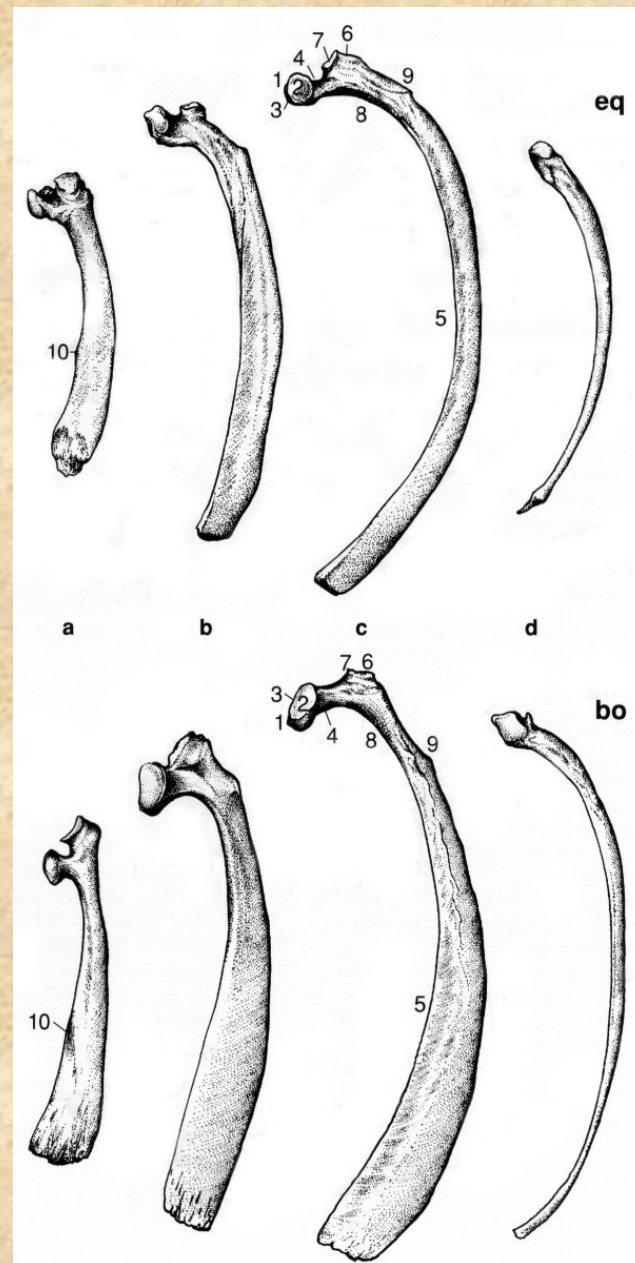


Kost křížová (*os sacrum*)

Obratle a žebra

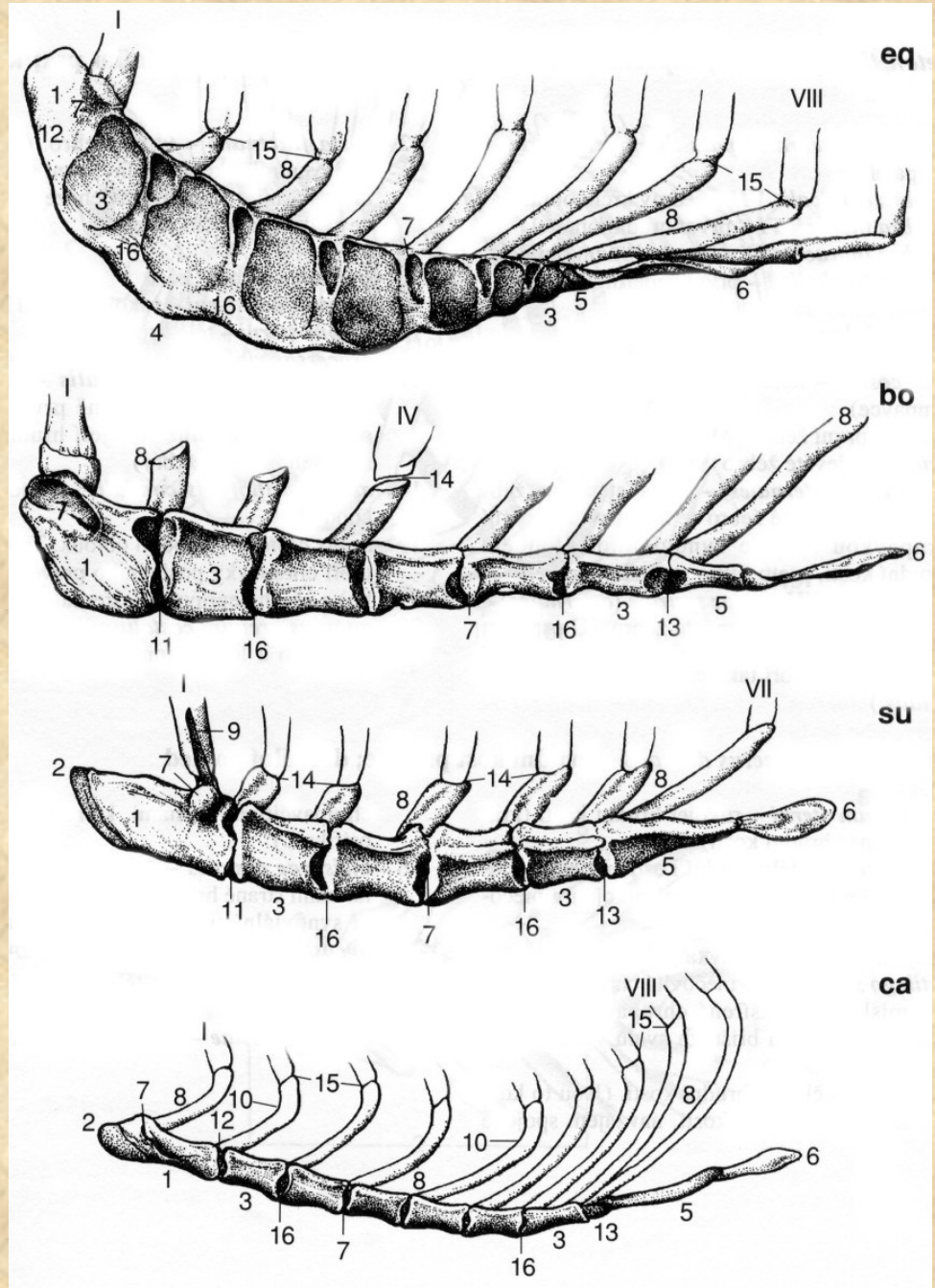


**Ocasní obratle (*vertebrae caudales*)
a hlavičky žebří (caput costae) koně**

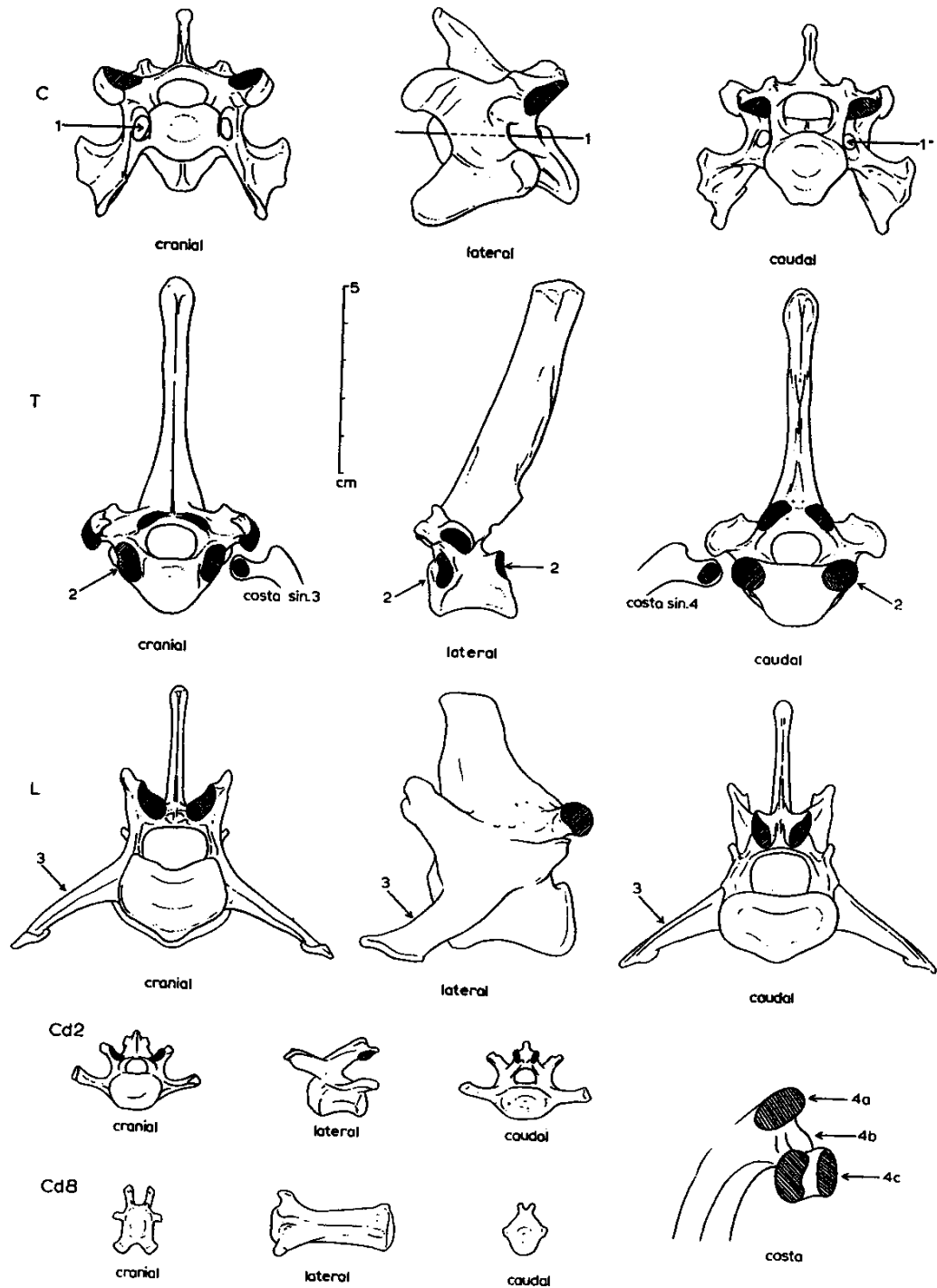


Žebra (*costae*)

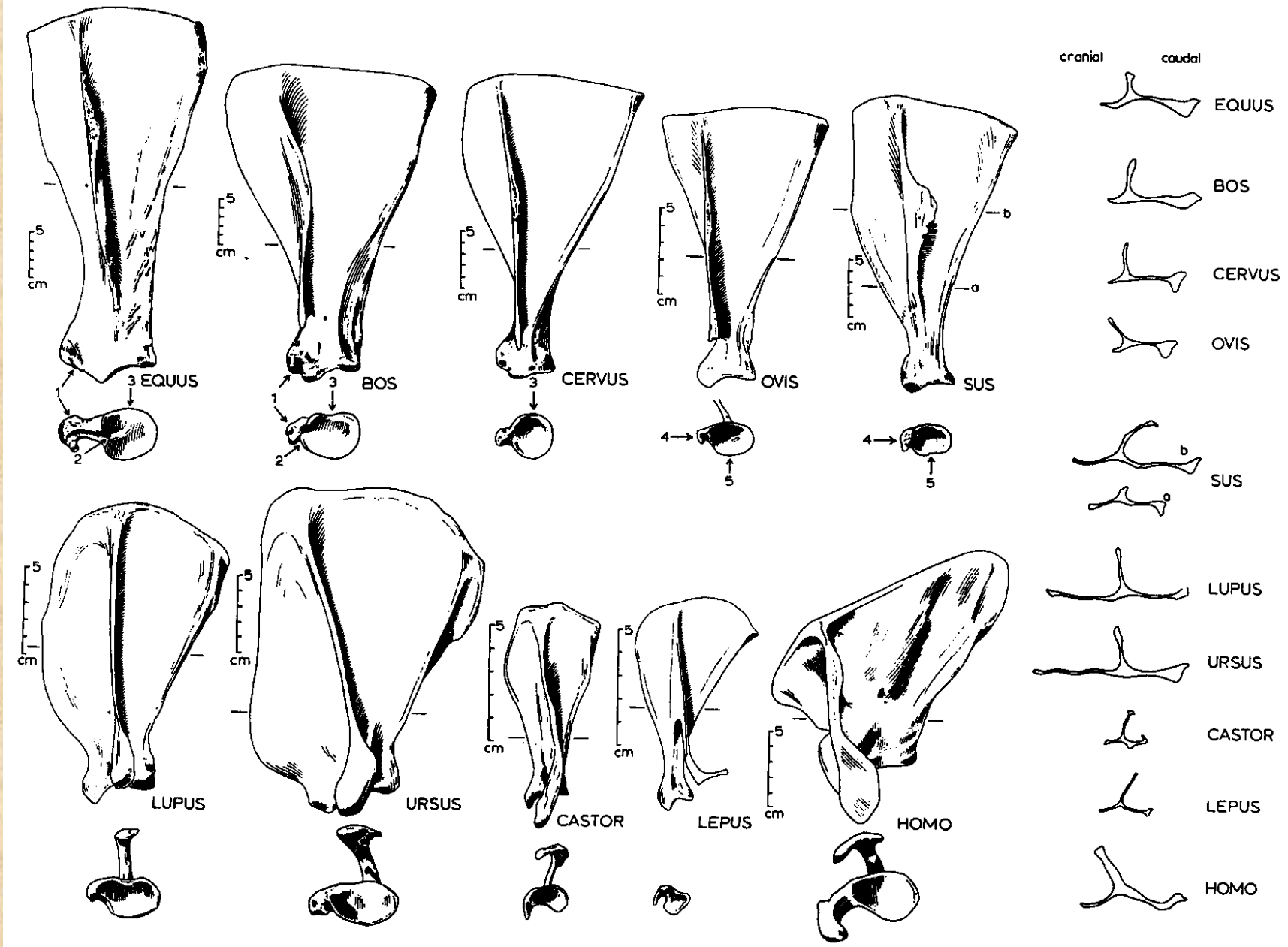
Hrudní kost (*sternum*)



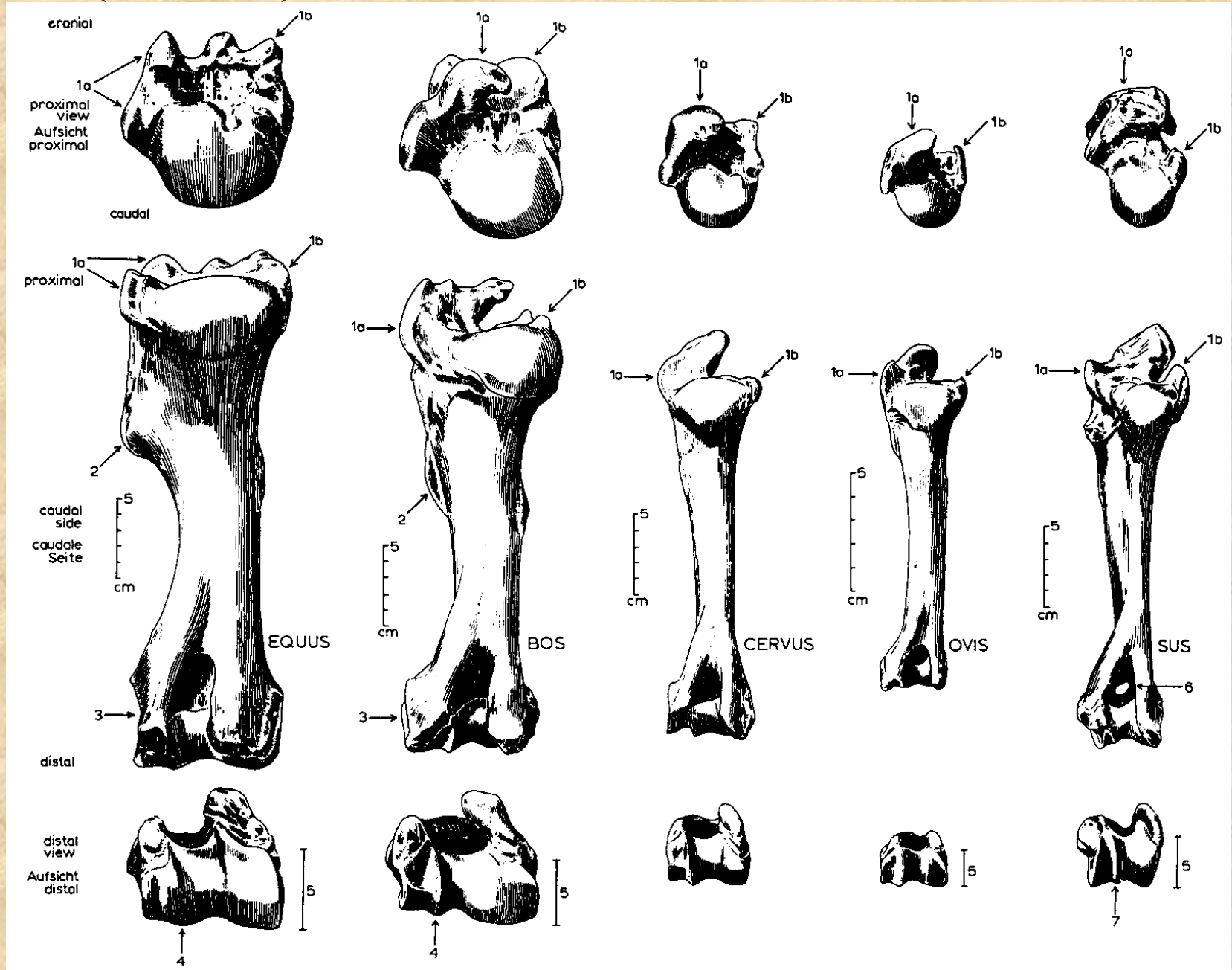
Obratle vlka



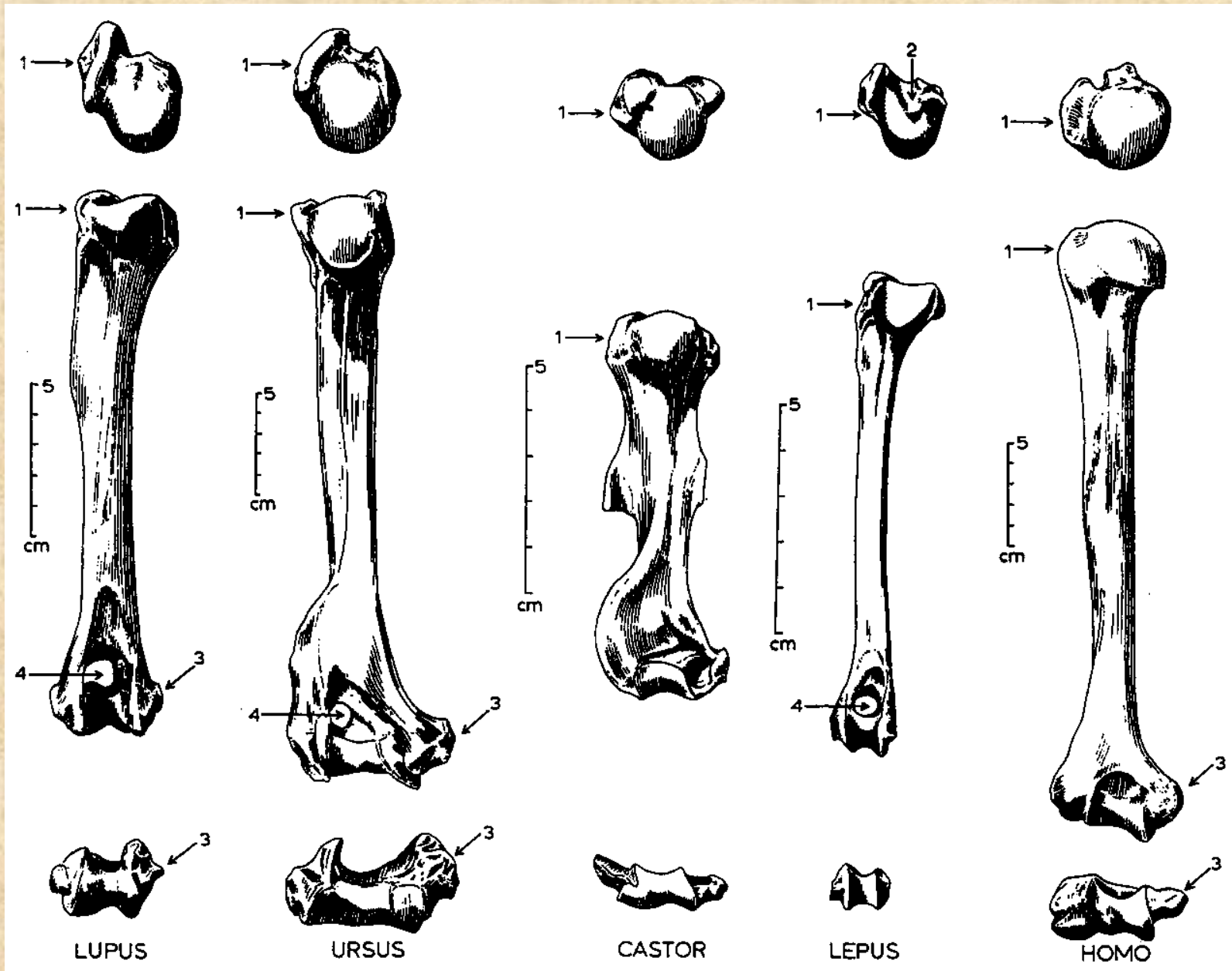
Lopatka (*scapula*)



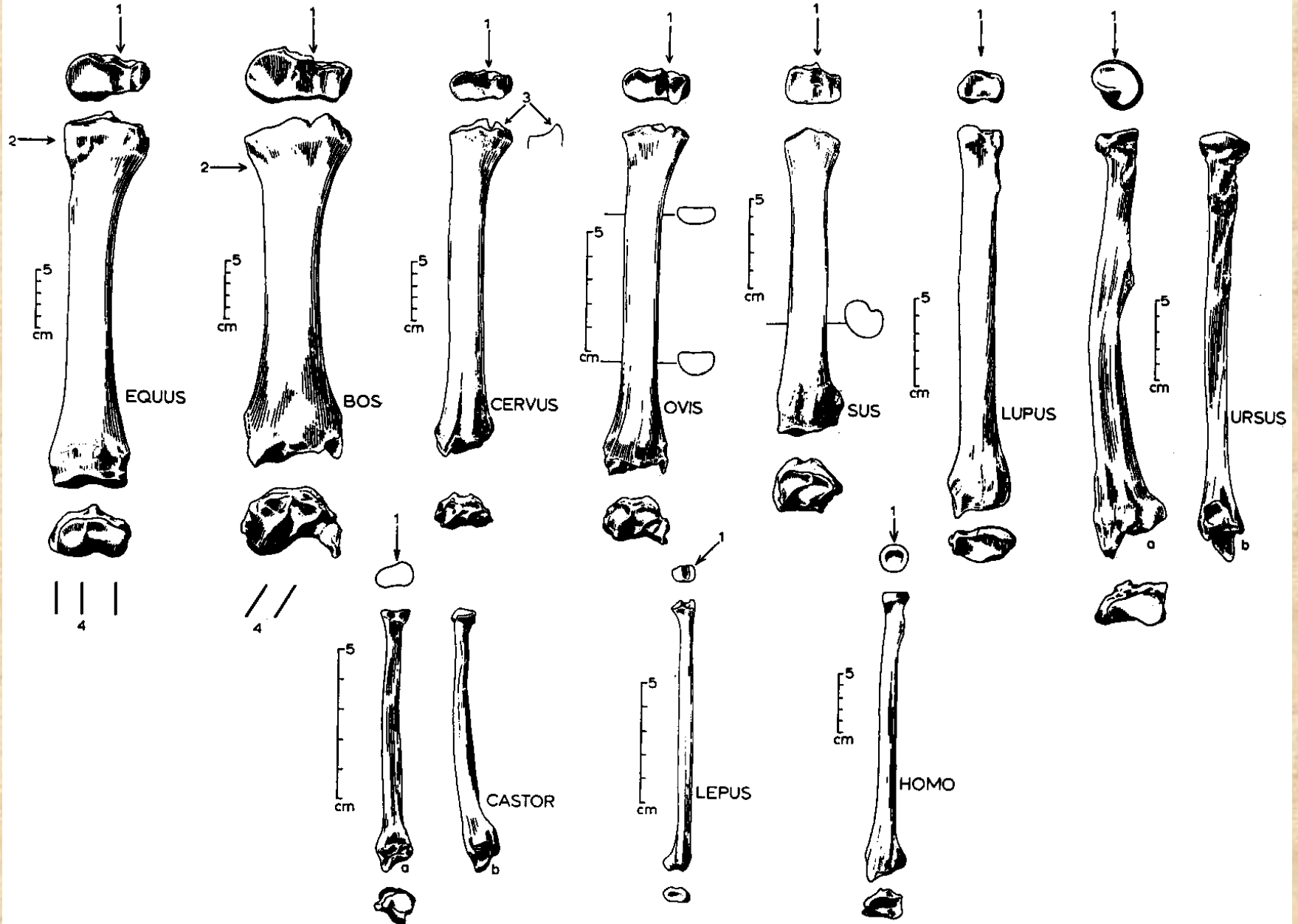
Pažní kost (*humerus*)



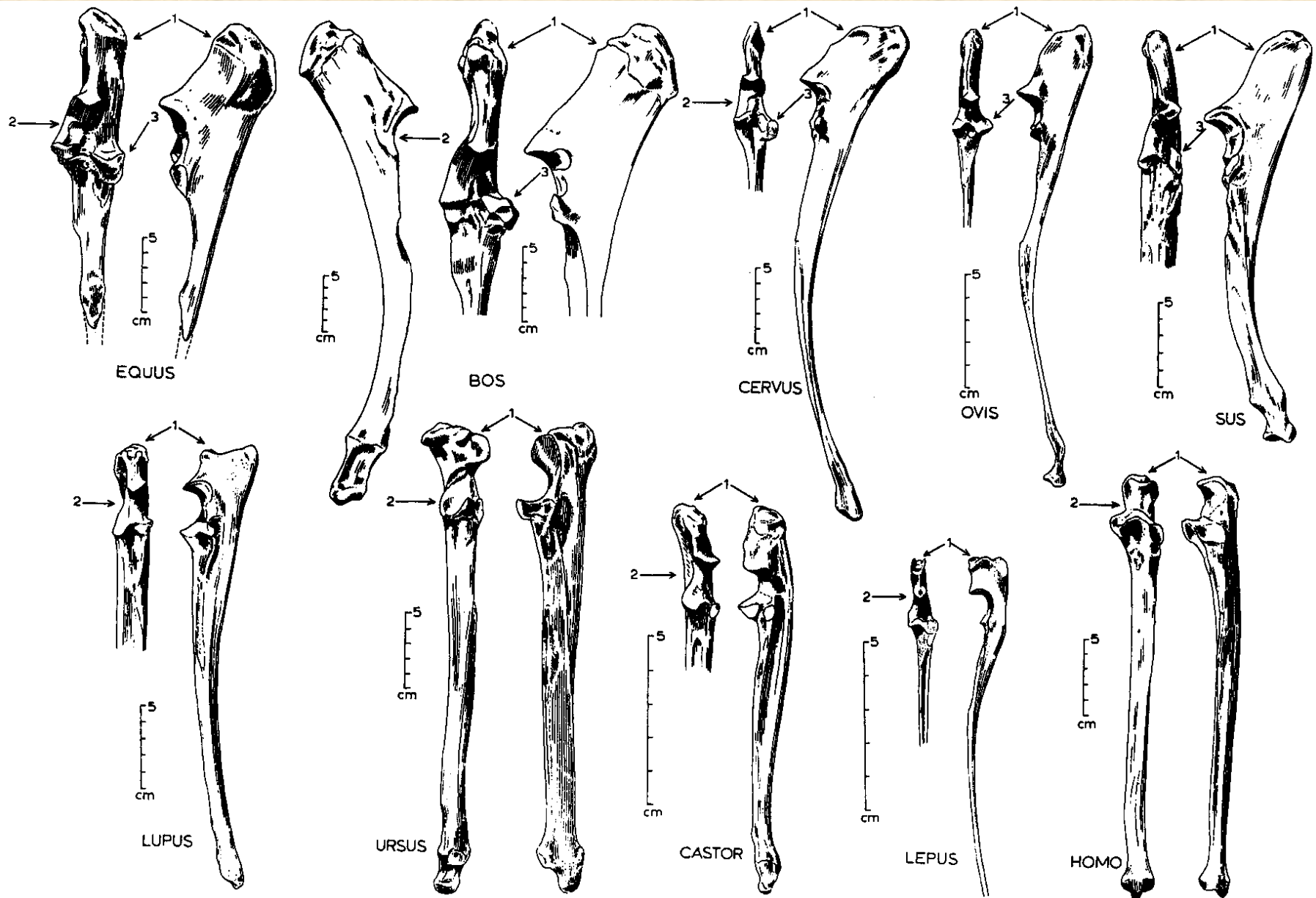
Pažní kost (*humerus*)



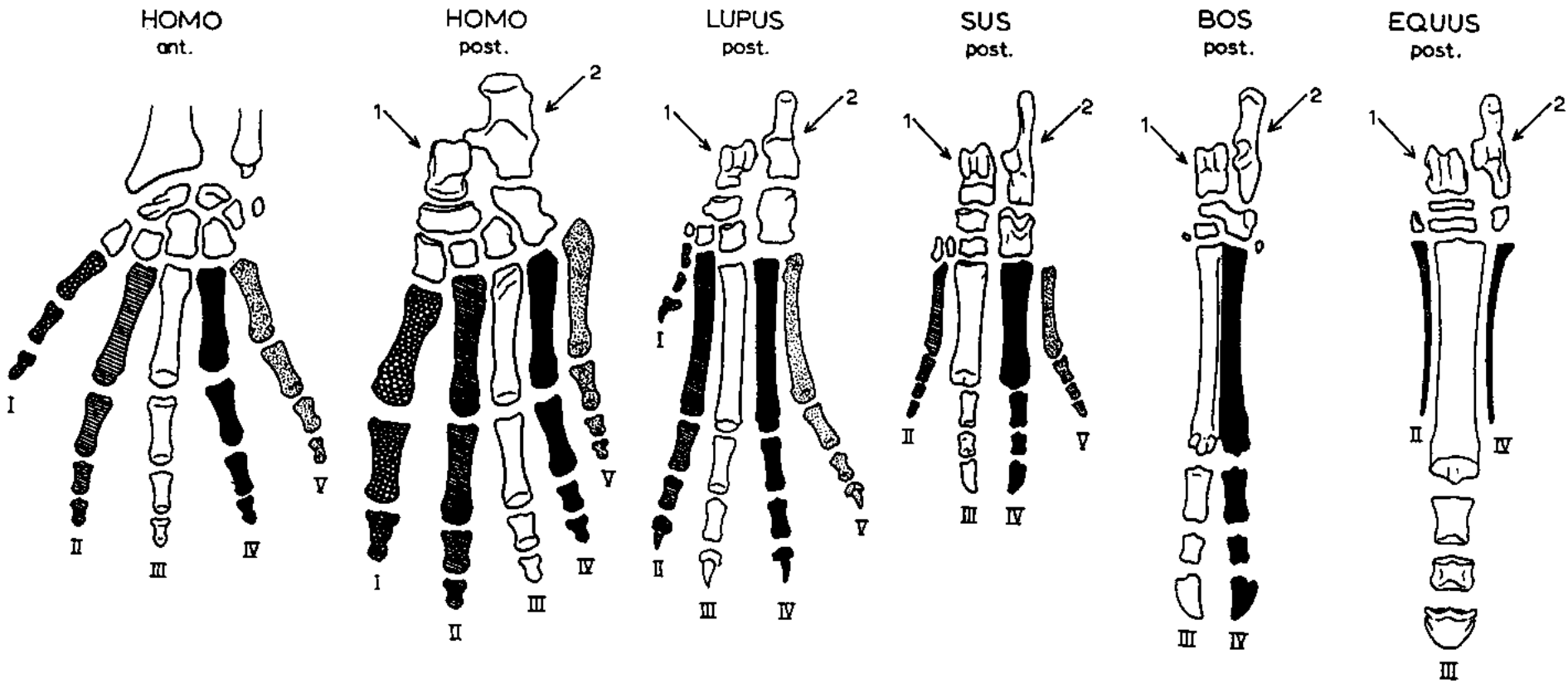
Vřetenní kost (*radius*)



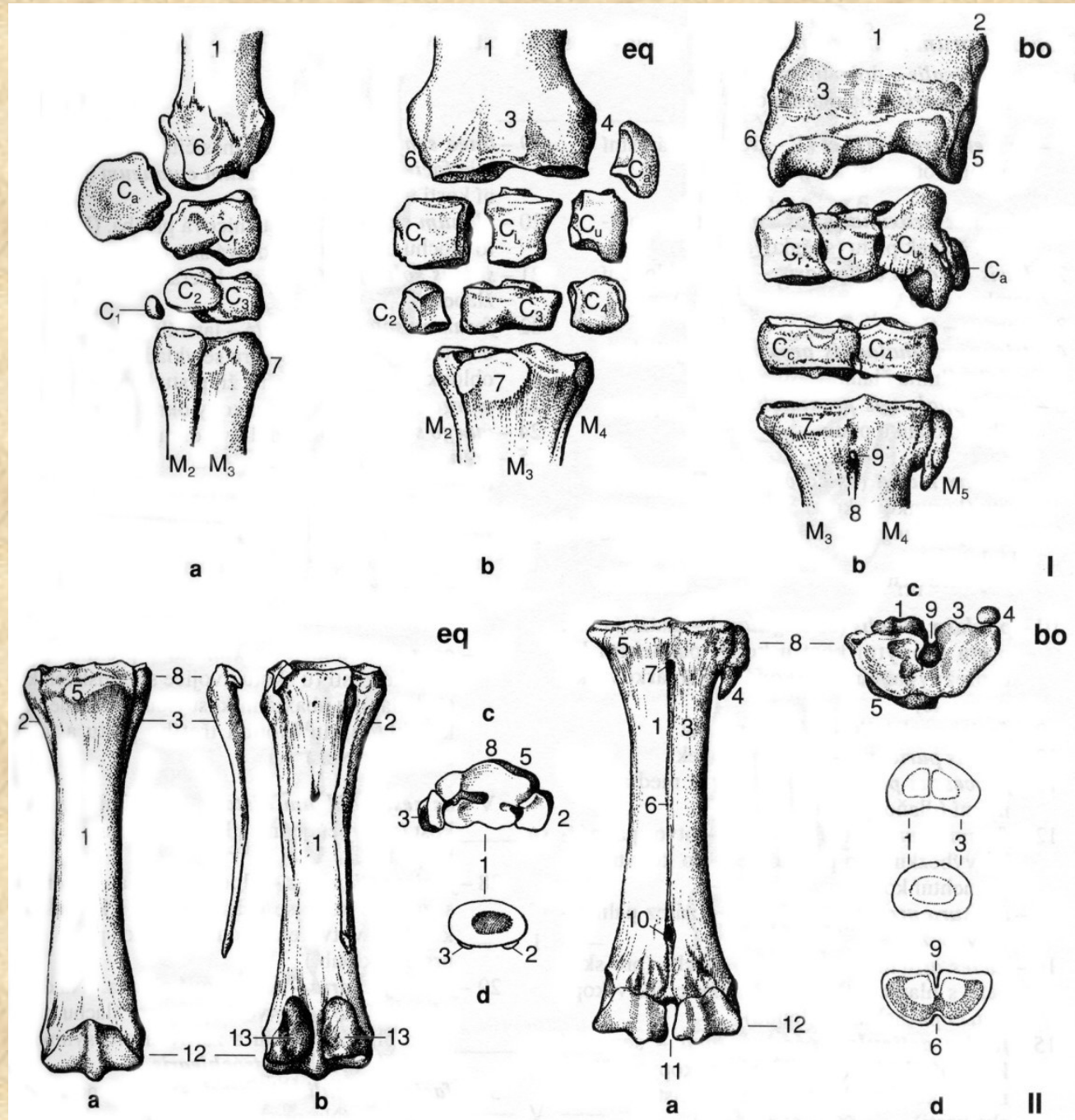
Loketní kost (*ulna*)



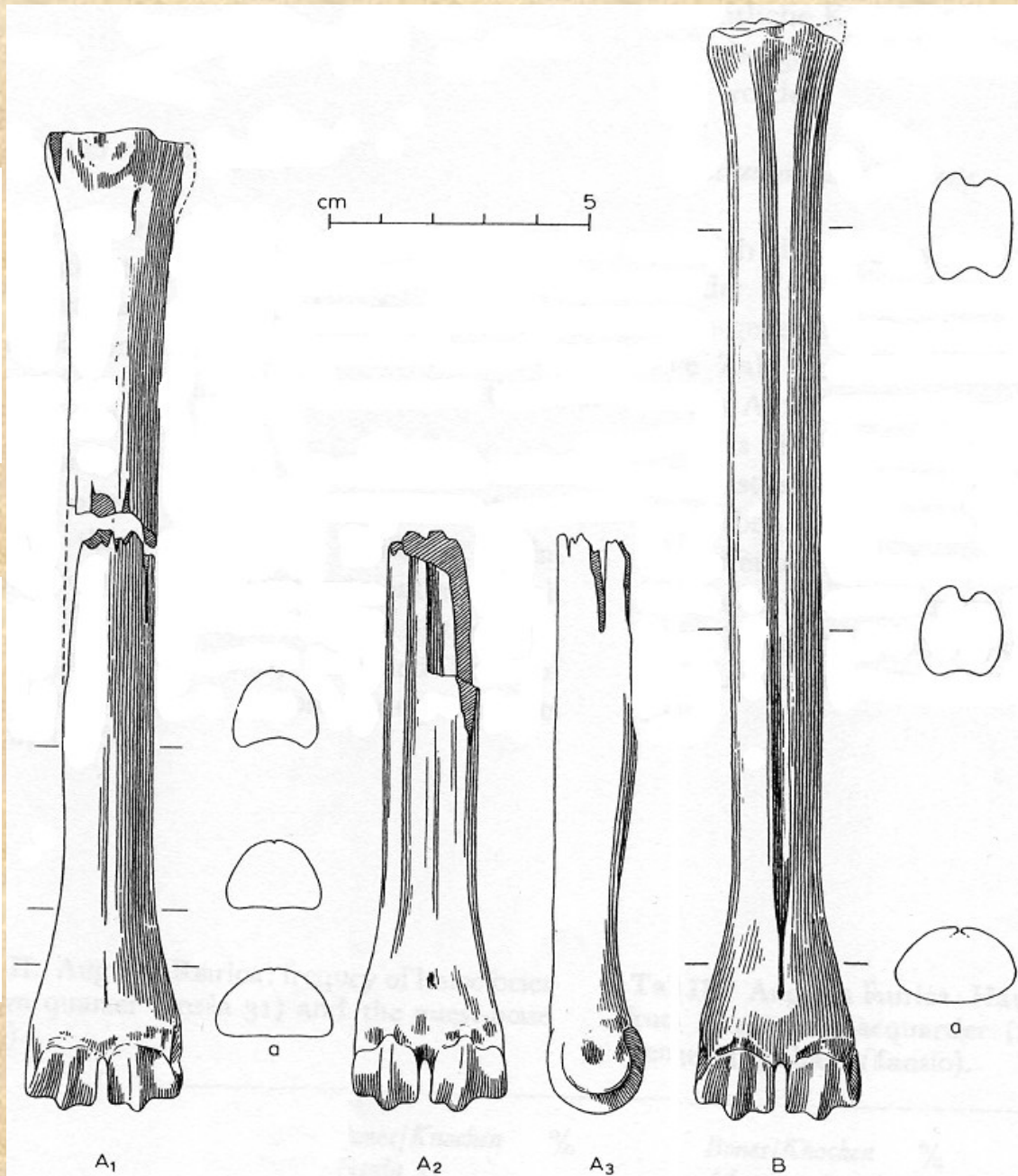
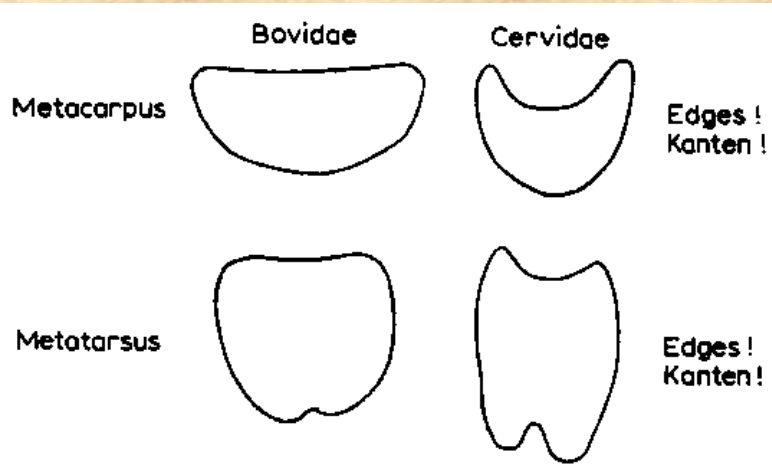
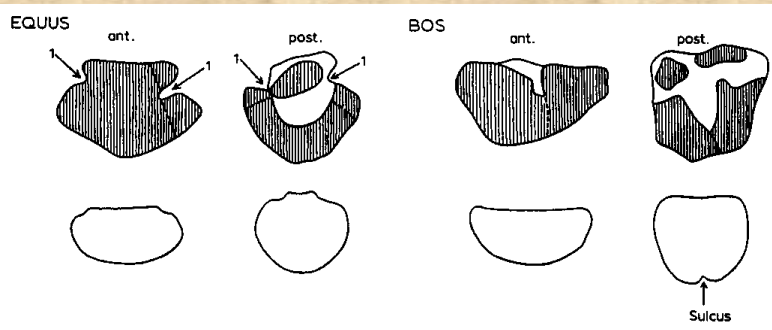
Stavba Autopodia



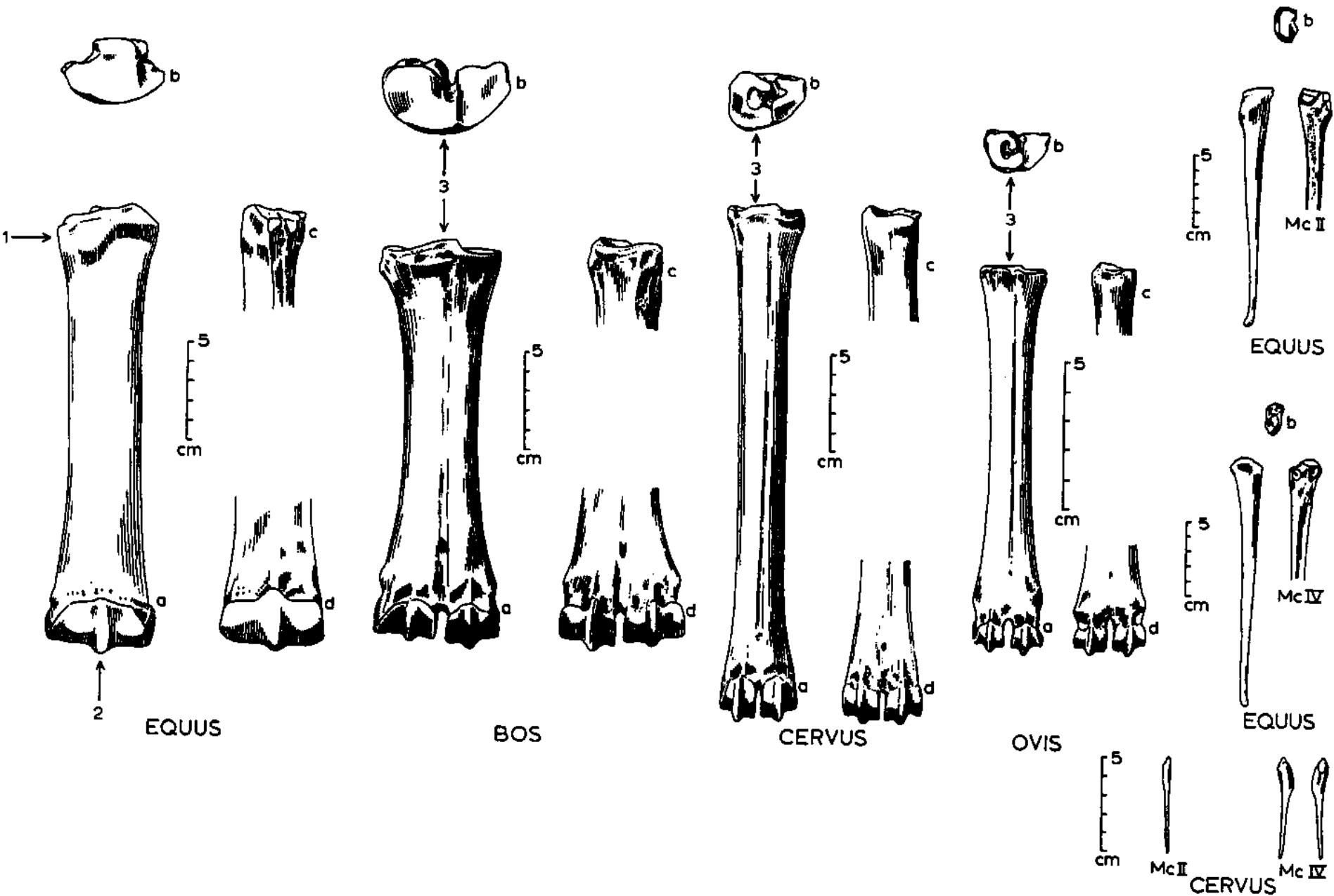
Zápěstí (*carpus*)



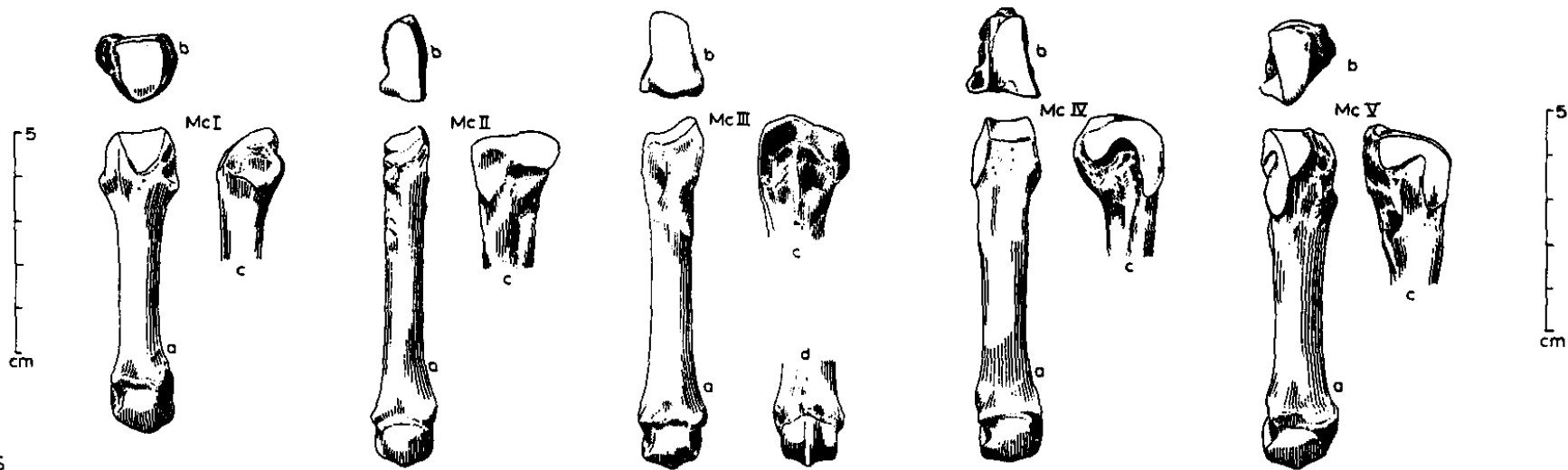
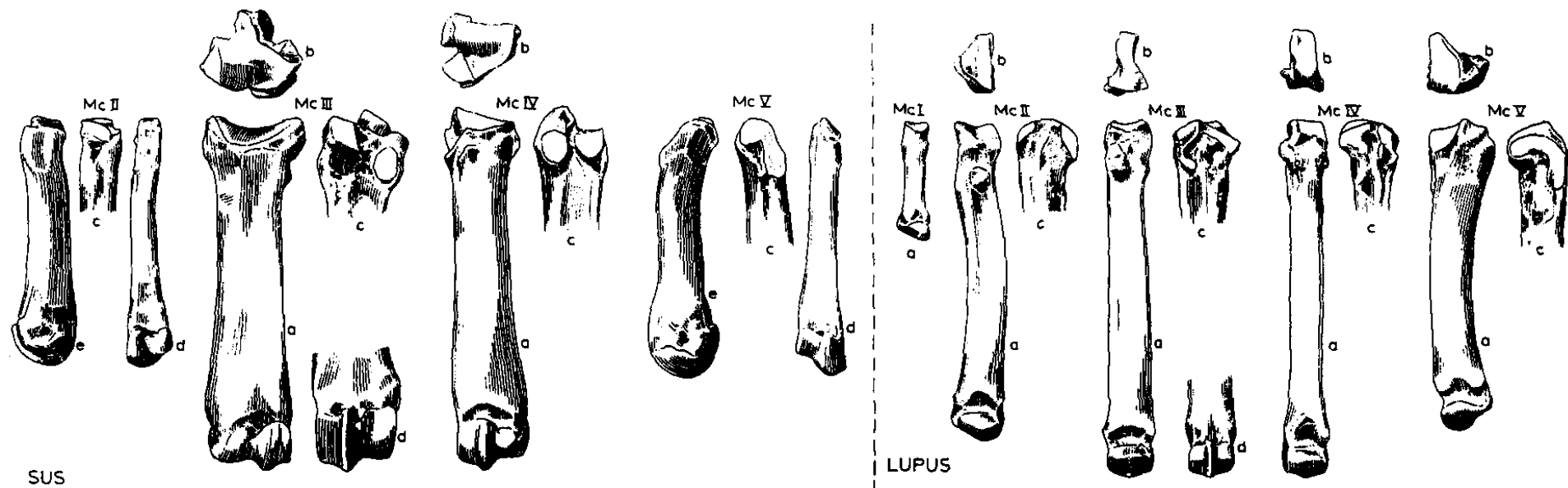
Rozdíl mezi záprstními a nártními kostmi



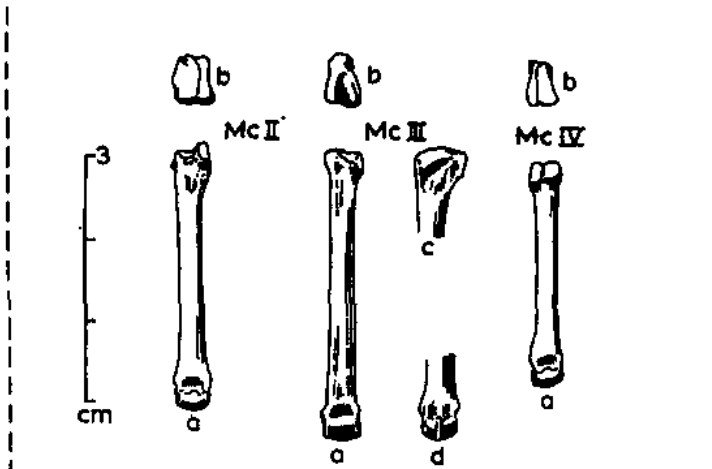
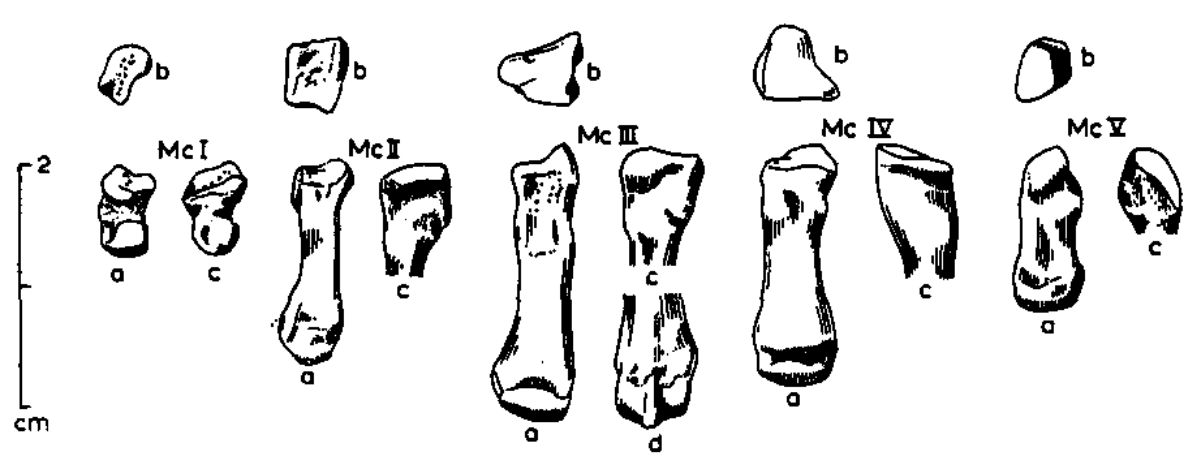
Záprstní kosti (*metacarpalia*)



Záprstní kosti (*metacarpalia*)

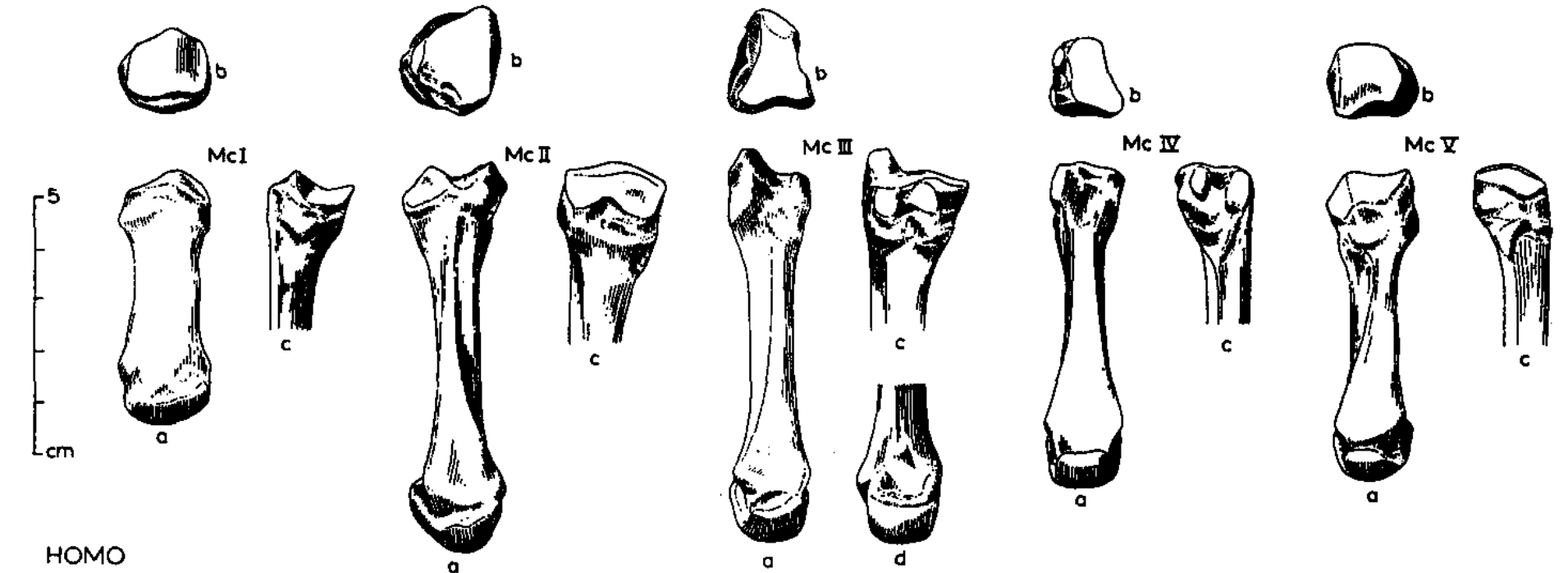


Záprstní kosti (*metacarpalia*)



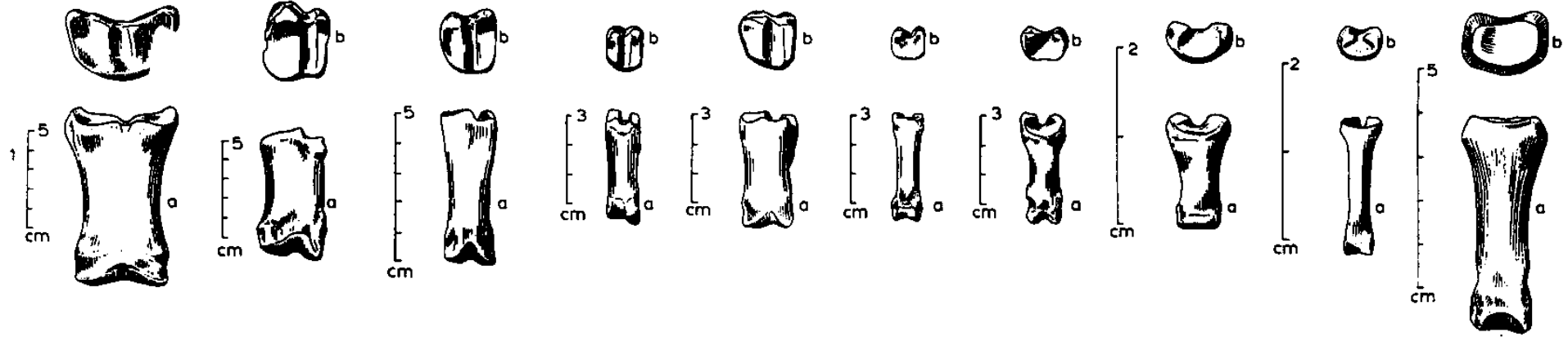
CASTOR

LEPUS



HOMO

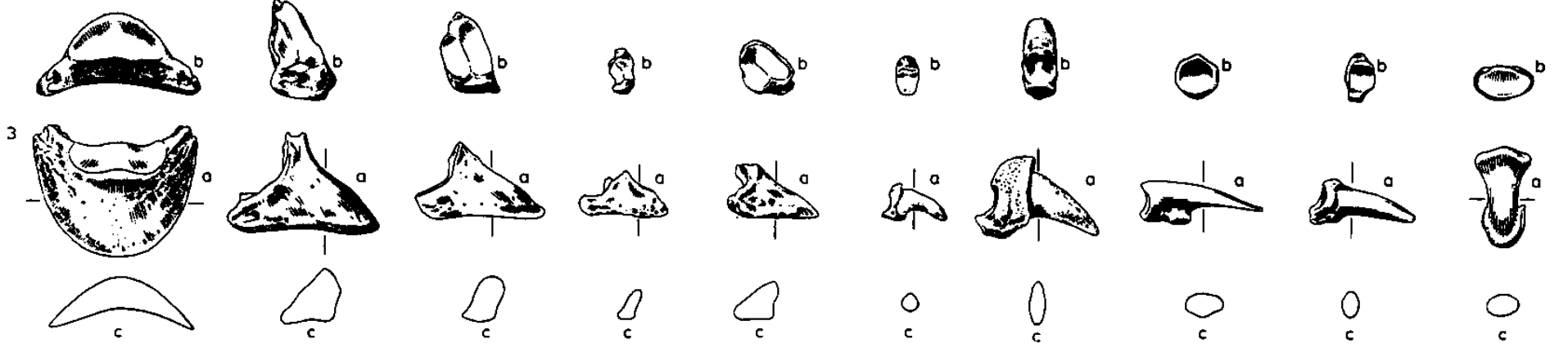
Prstní články (*phalanges*)



EQUUS BOS CERVUS OVIS SUS LUPUS URSUS CASTOR LEPUS HOMO



EQUUS BOS CERVUS OVIS SUS LUPUS URSUS CASTOR LEPUS HOMO



EQUUS BOS CERVUS OVIS SUS LUPUS URSUS CASTOR LEPUS HOMO

Děkuji za pozornost!

