

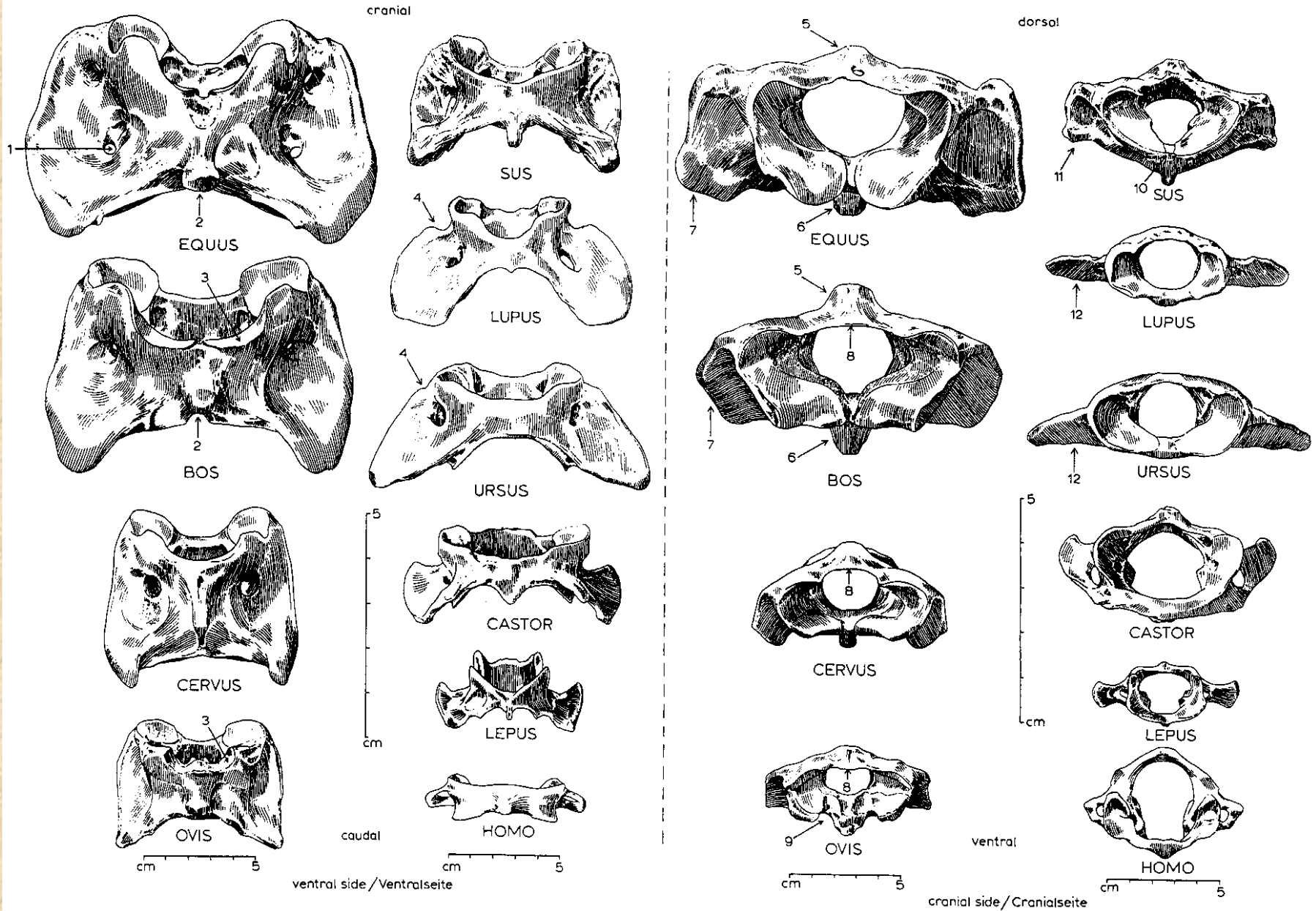
# Základy osteologie

Obratle, žebra a kosti přední končetiny



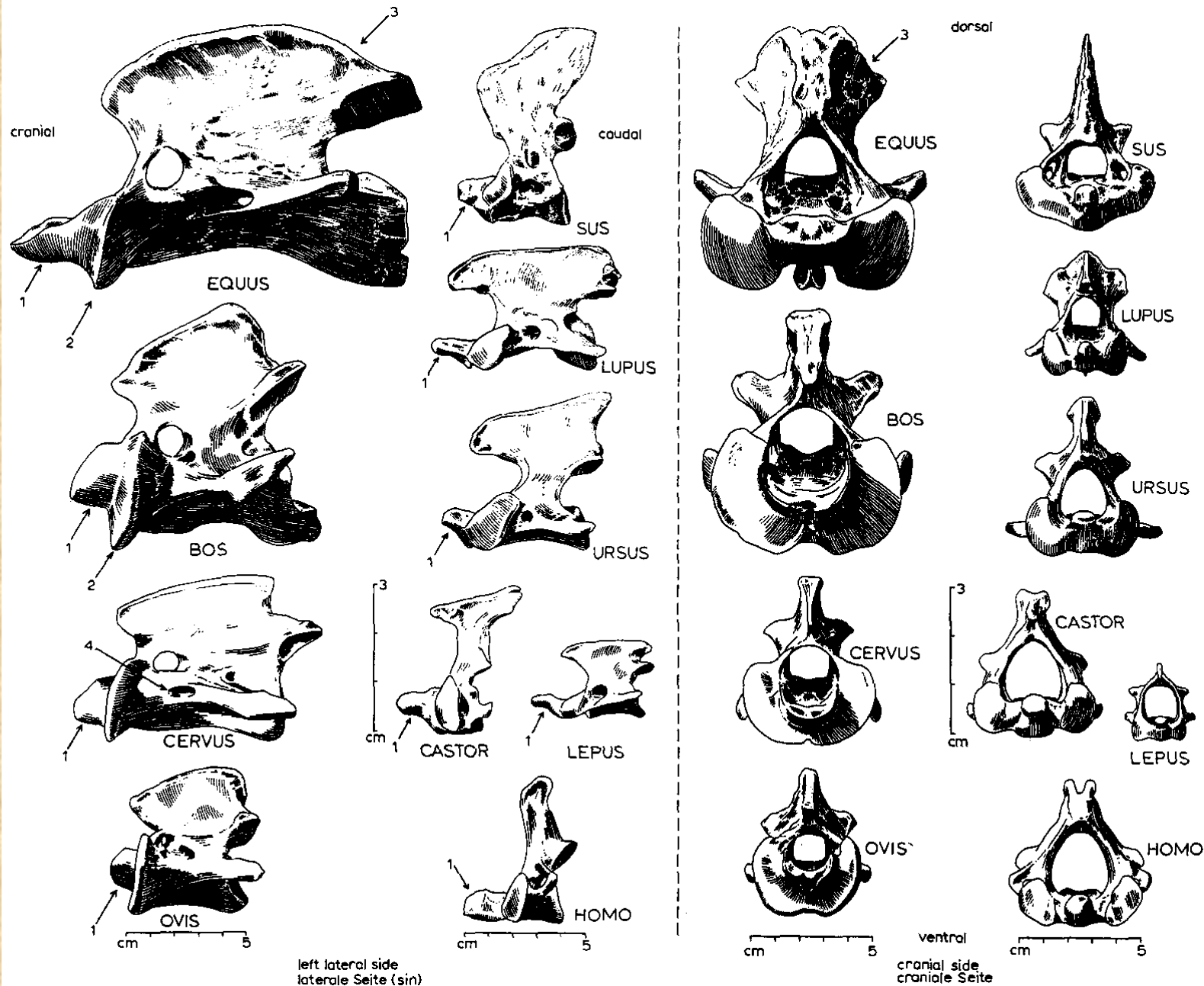
# Obratle a žebra

# Atlas (nosič)



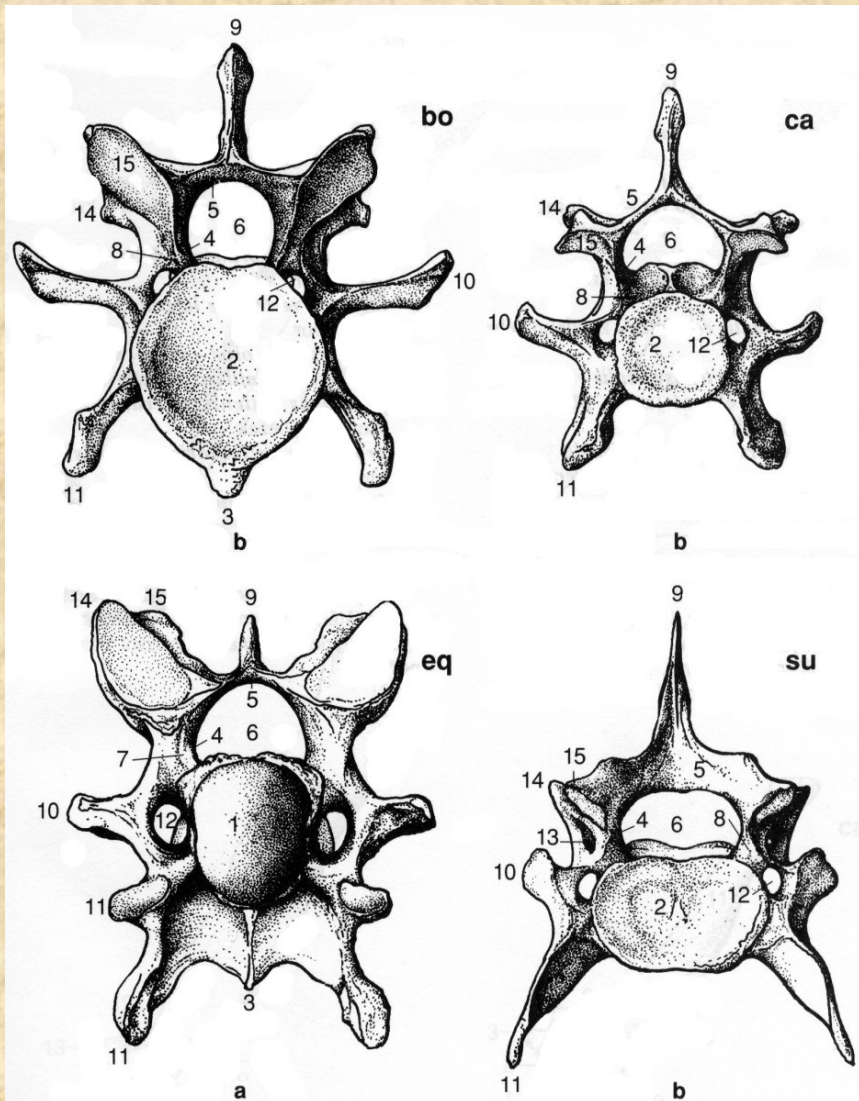
# Obratle a žebra

# *Epistrofeus (čepovec)*

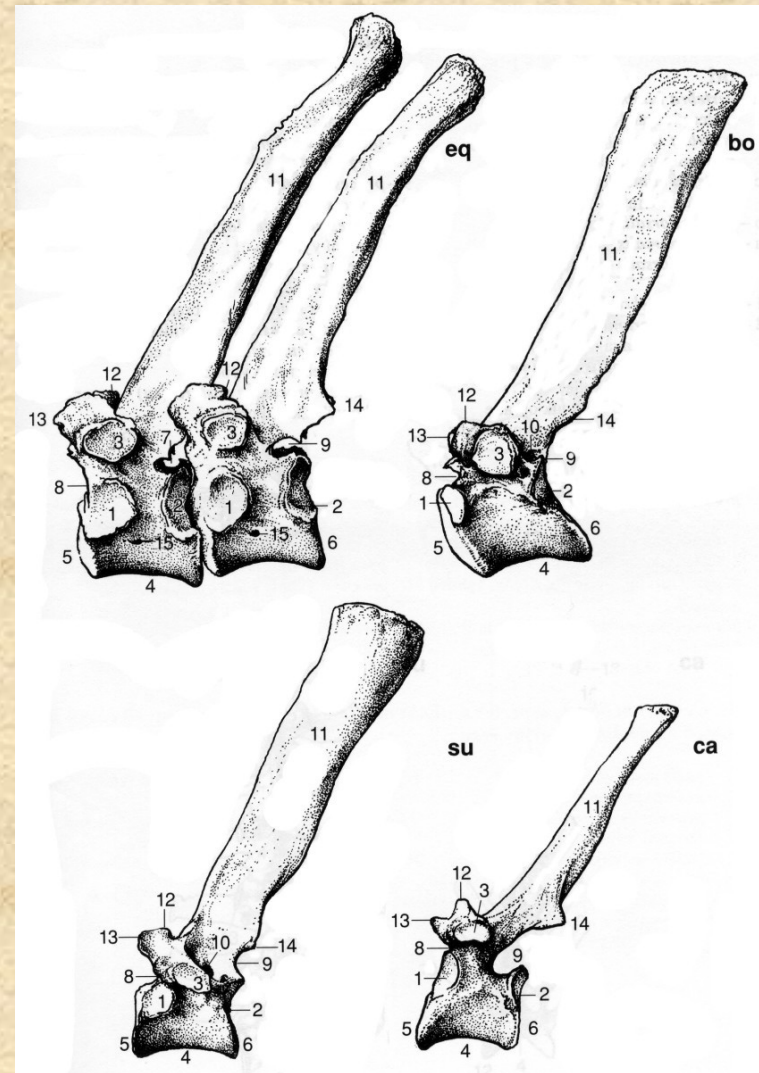




# Obratle a žebra

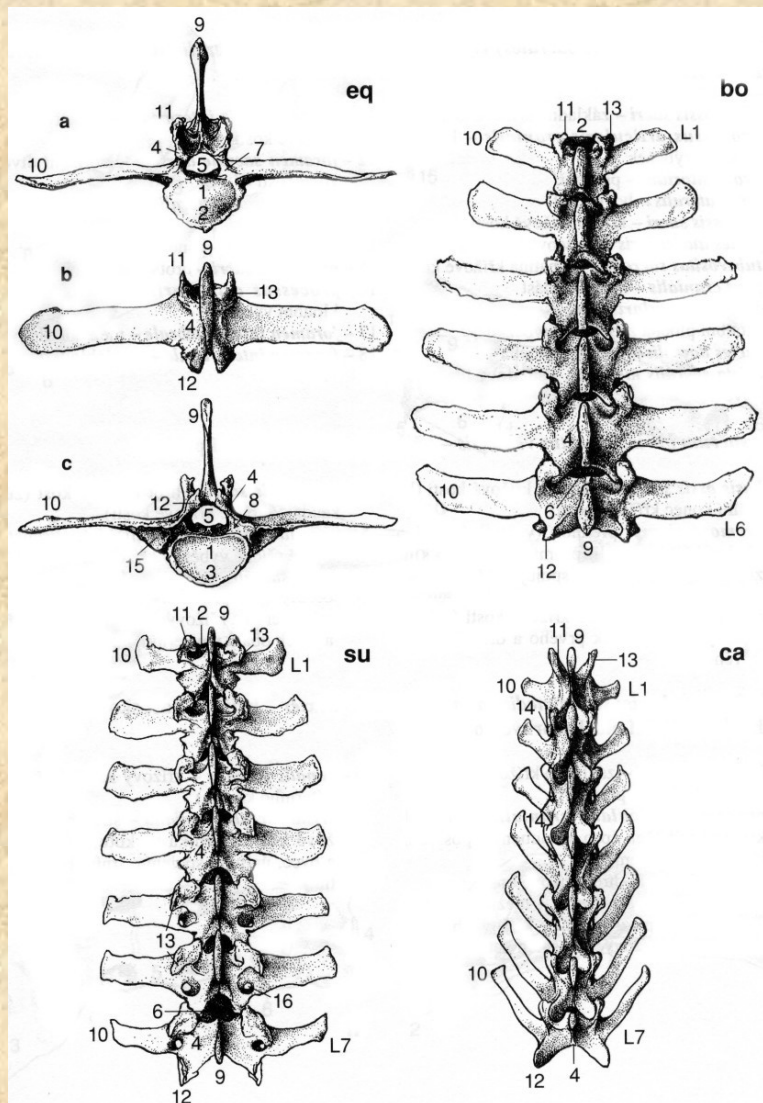


**Krční obratle (*vertebra cervicis*)**

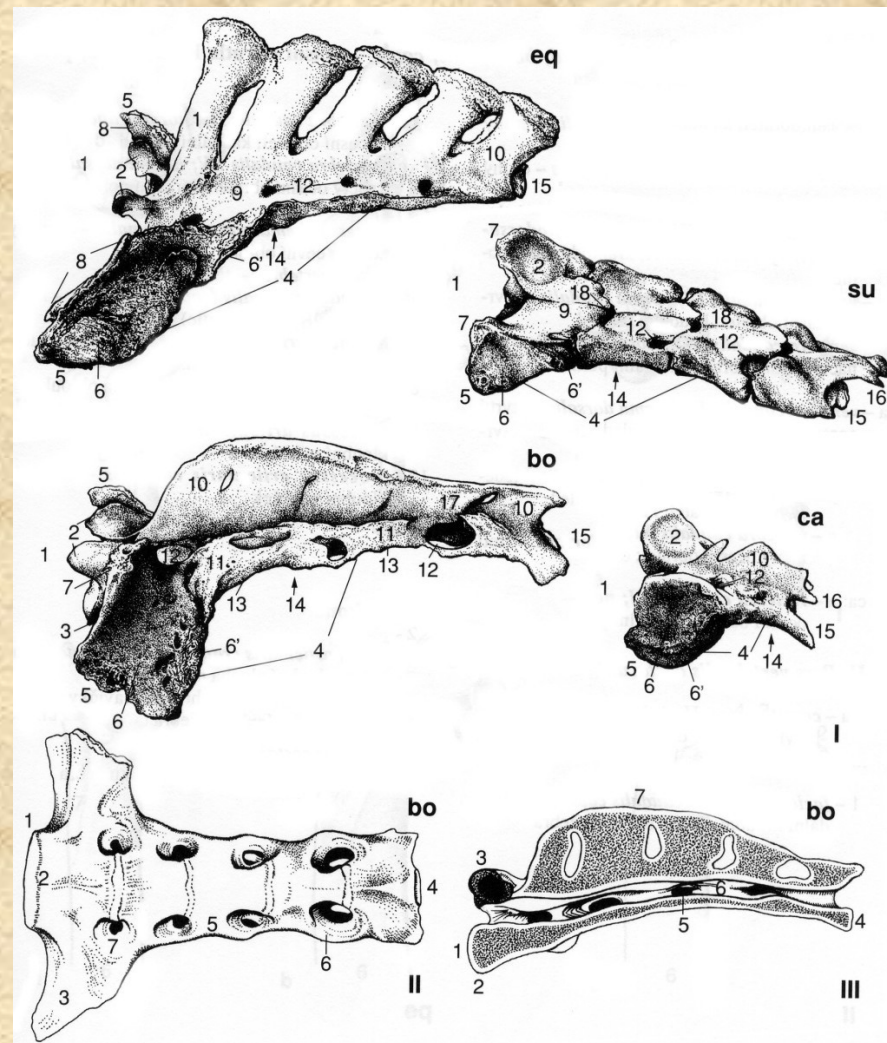


**Hrudní obratle (*vertebrae thoracicae*)**

# Obratle a žebra



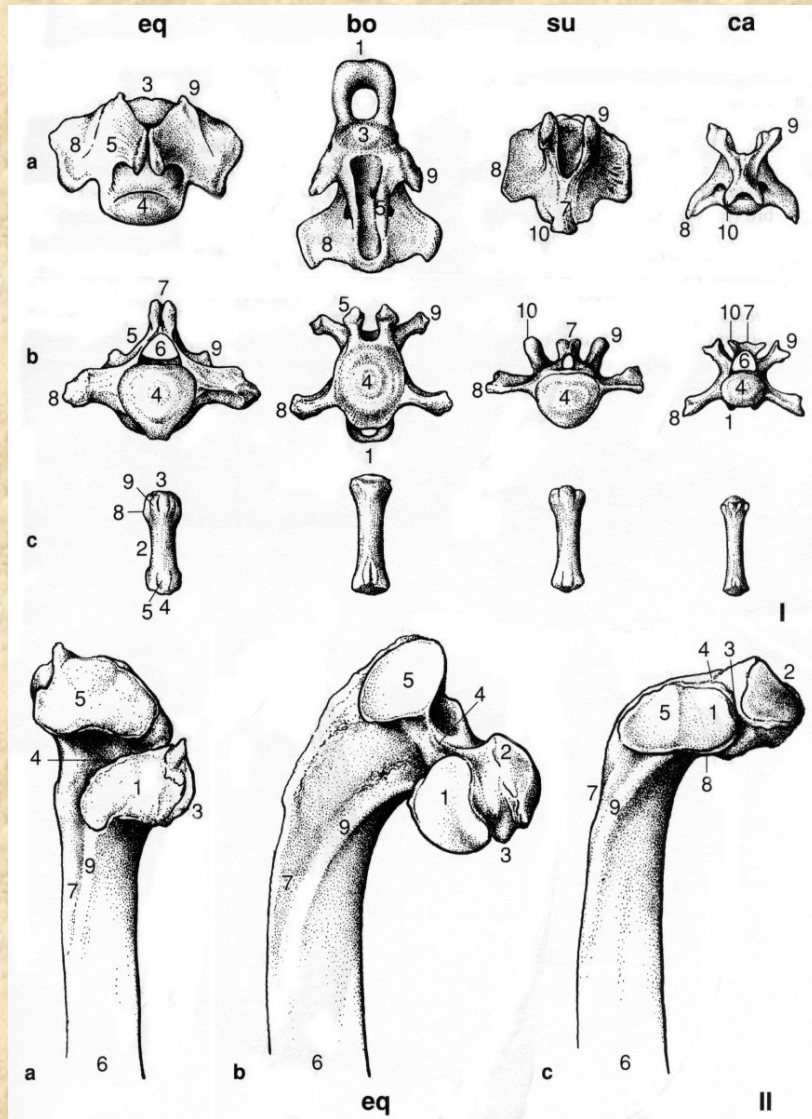
Bederní obratle (*vertebrae lumbales*)



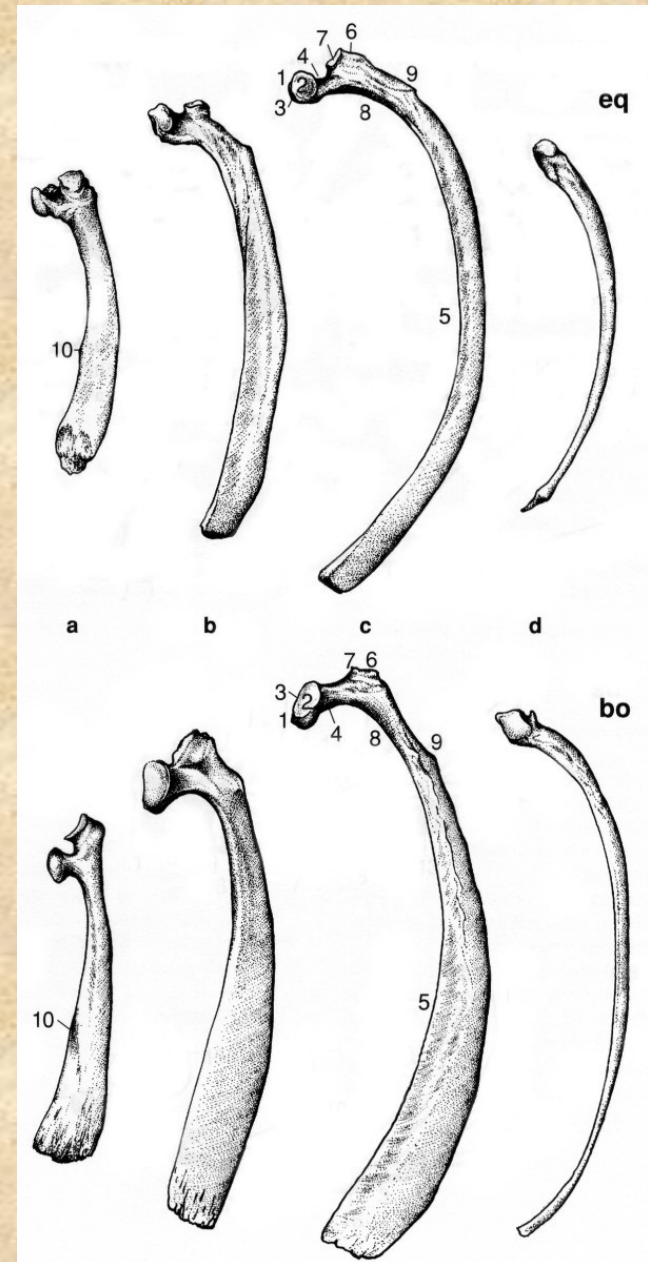
Kost křížová (*os sacrum*)



# Obratle a žebra

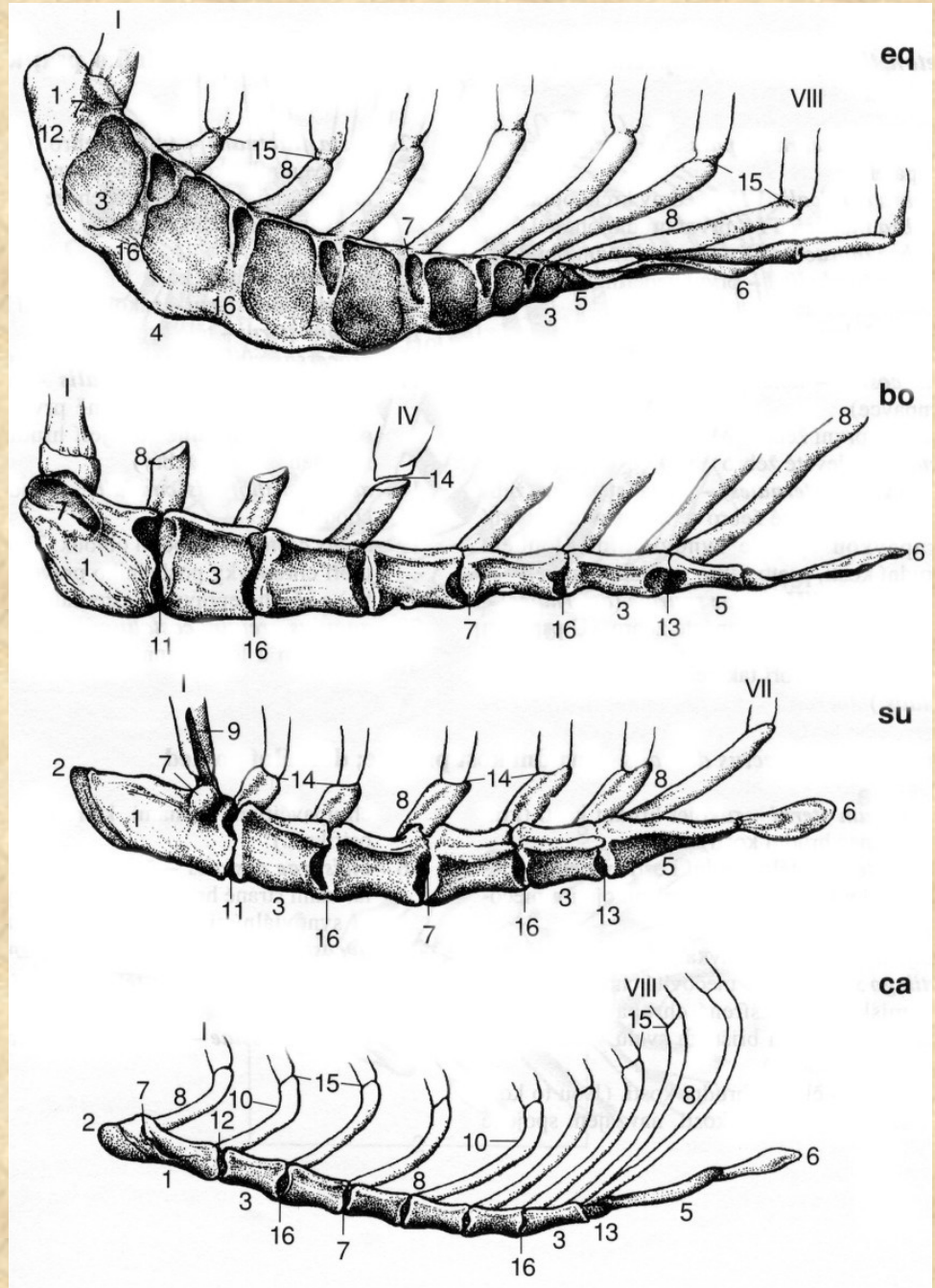


**Ocasní obratle (*vertebrae caudales*)  
a hlavičky žebří (caput costae) koně**

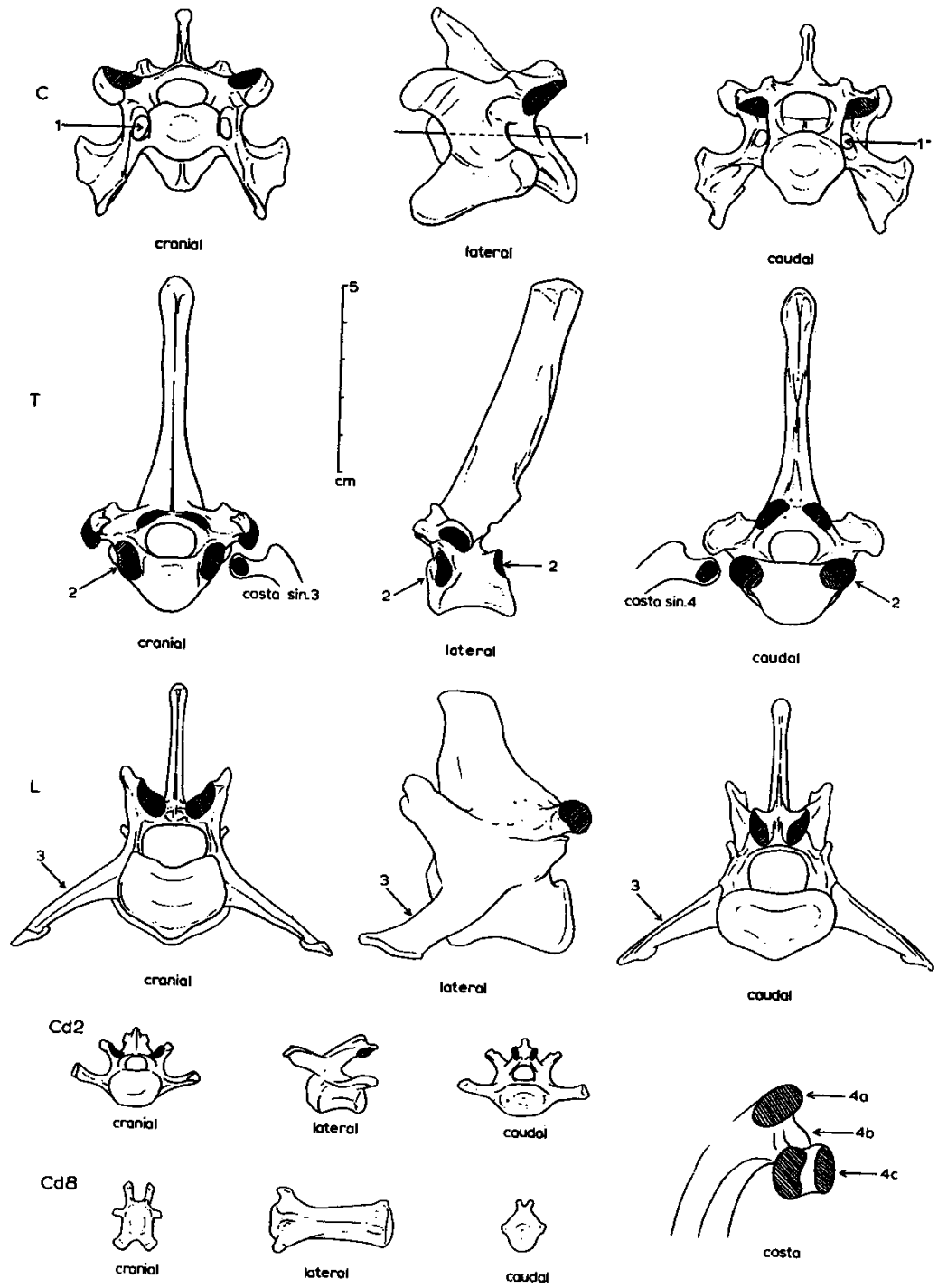


**Žebra (*costae*)**

# Hrudní kost (*sternum*)

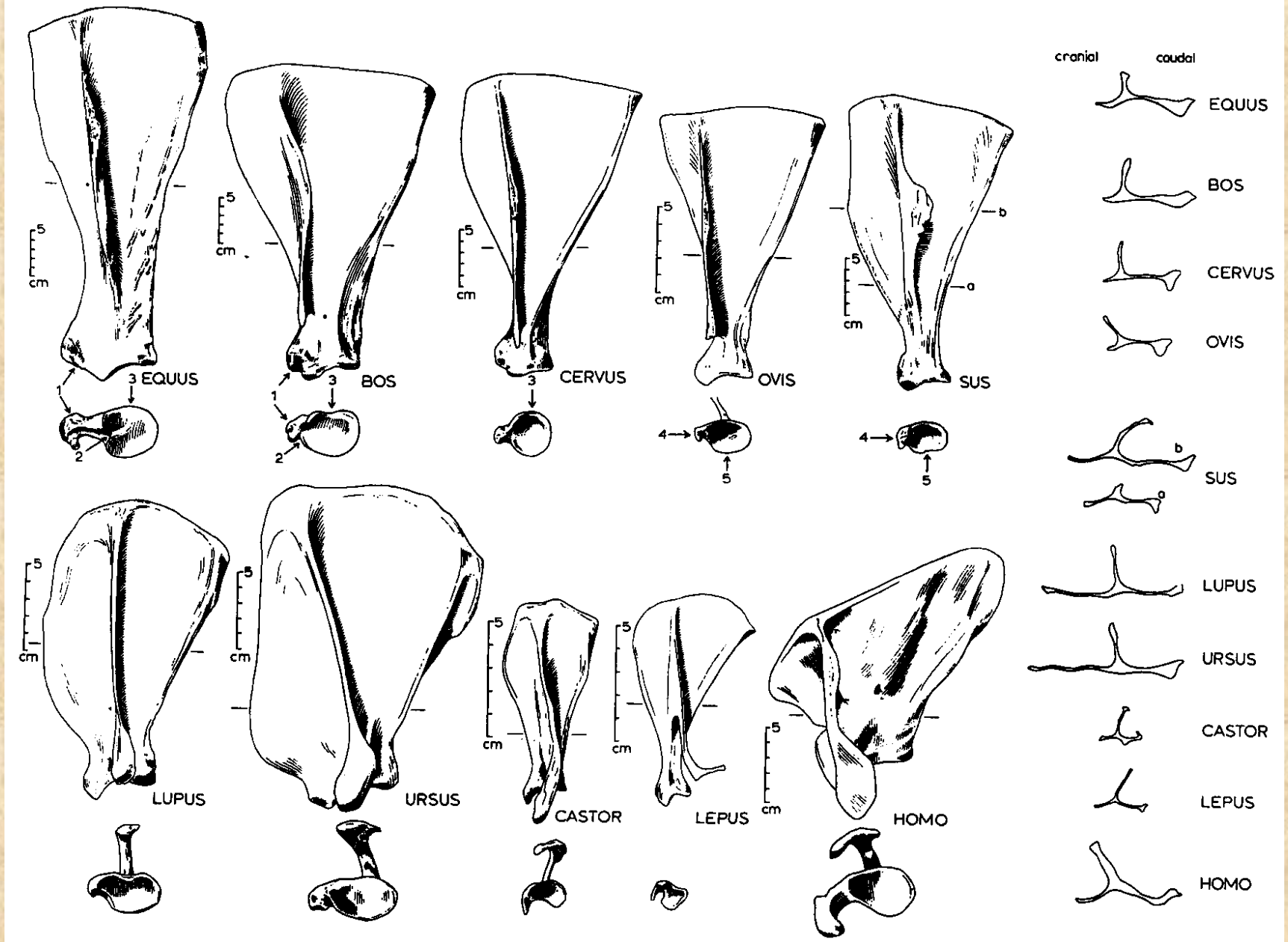


# Obratle vlka

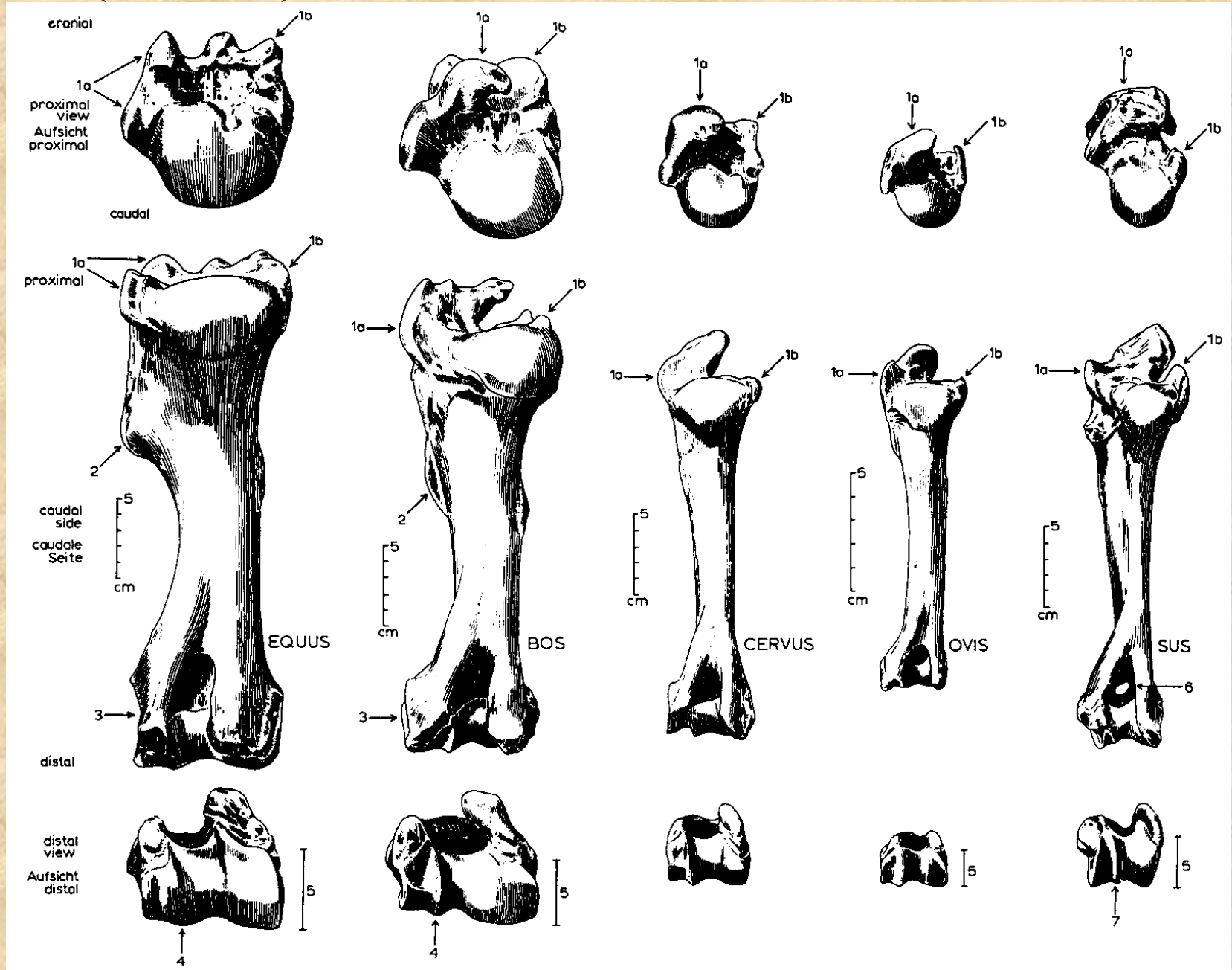




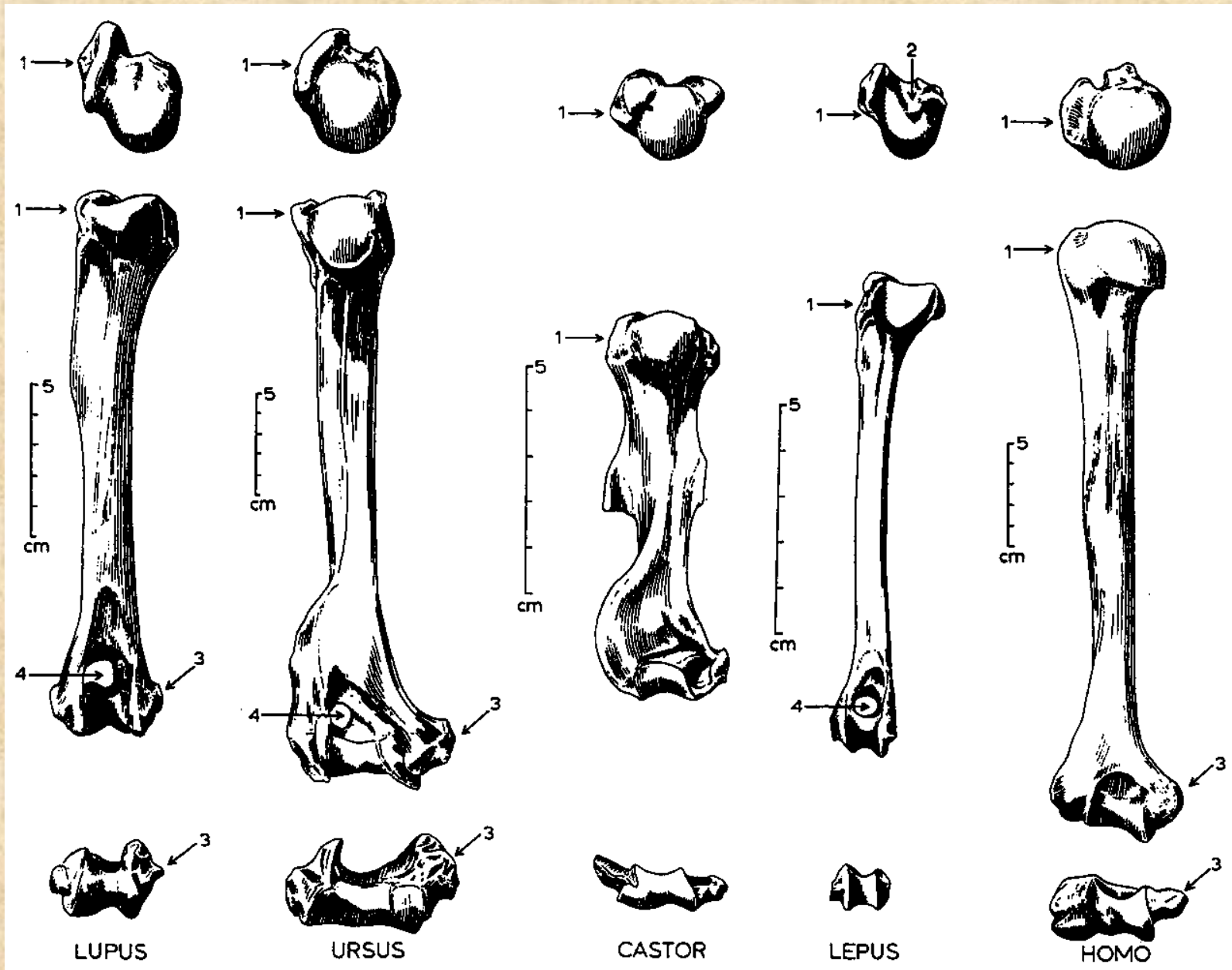
# Lopatka (*scapula*)



# Pažní kost (*humerus*)

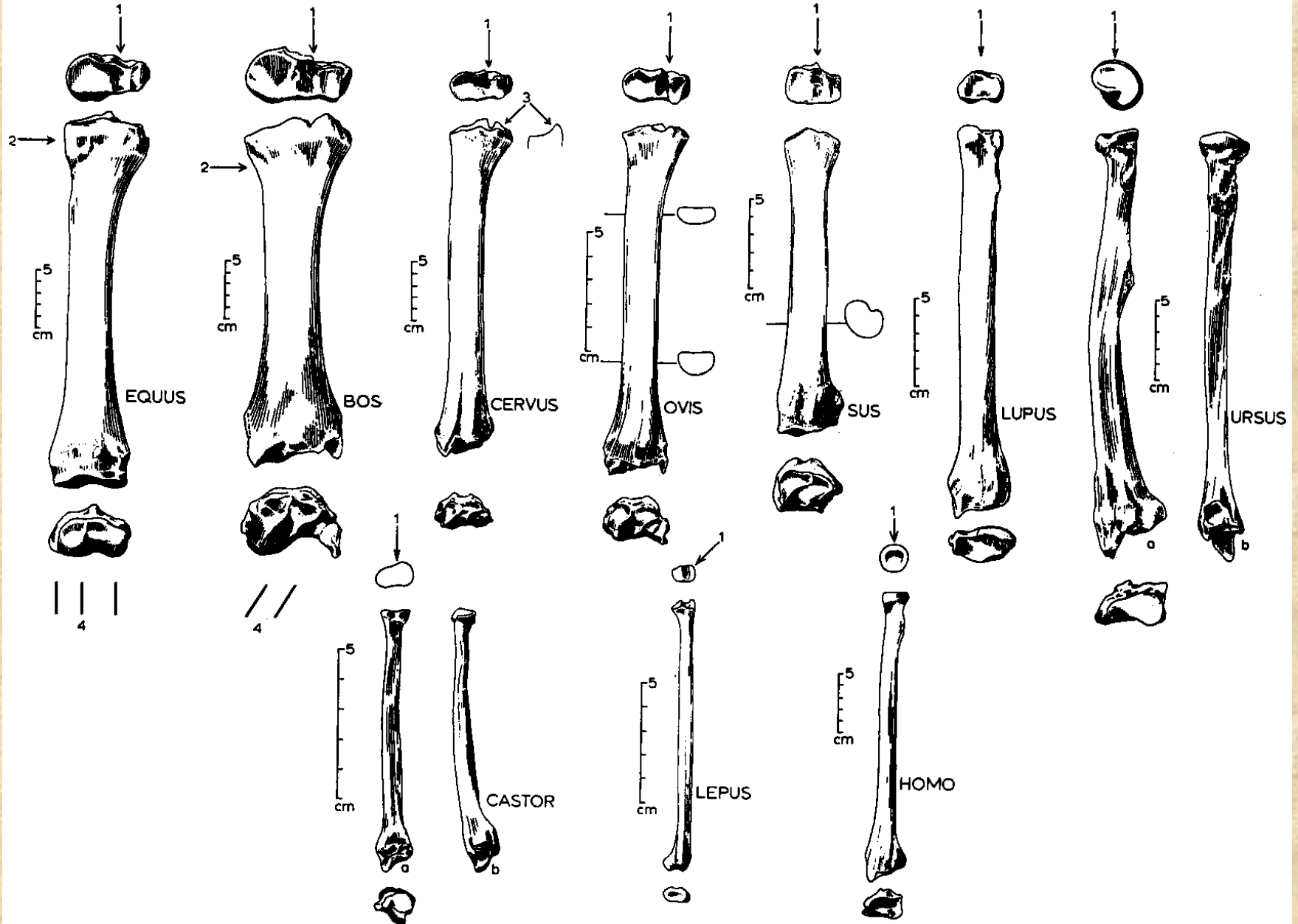


# Pažní kost (*humerus*)

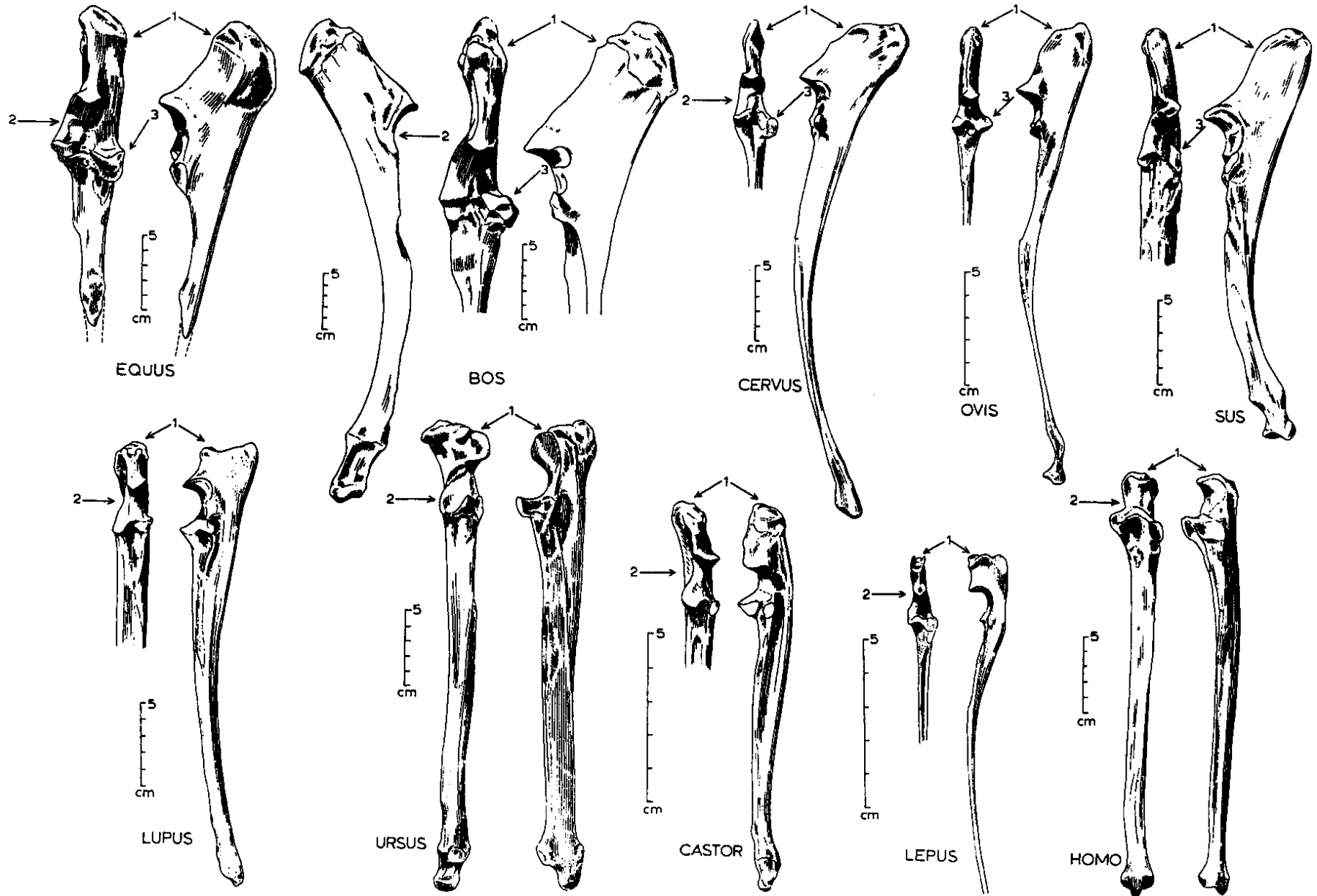




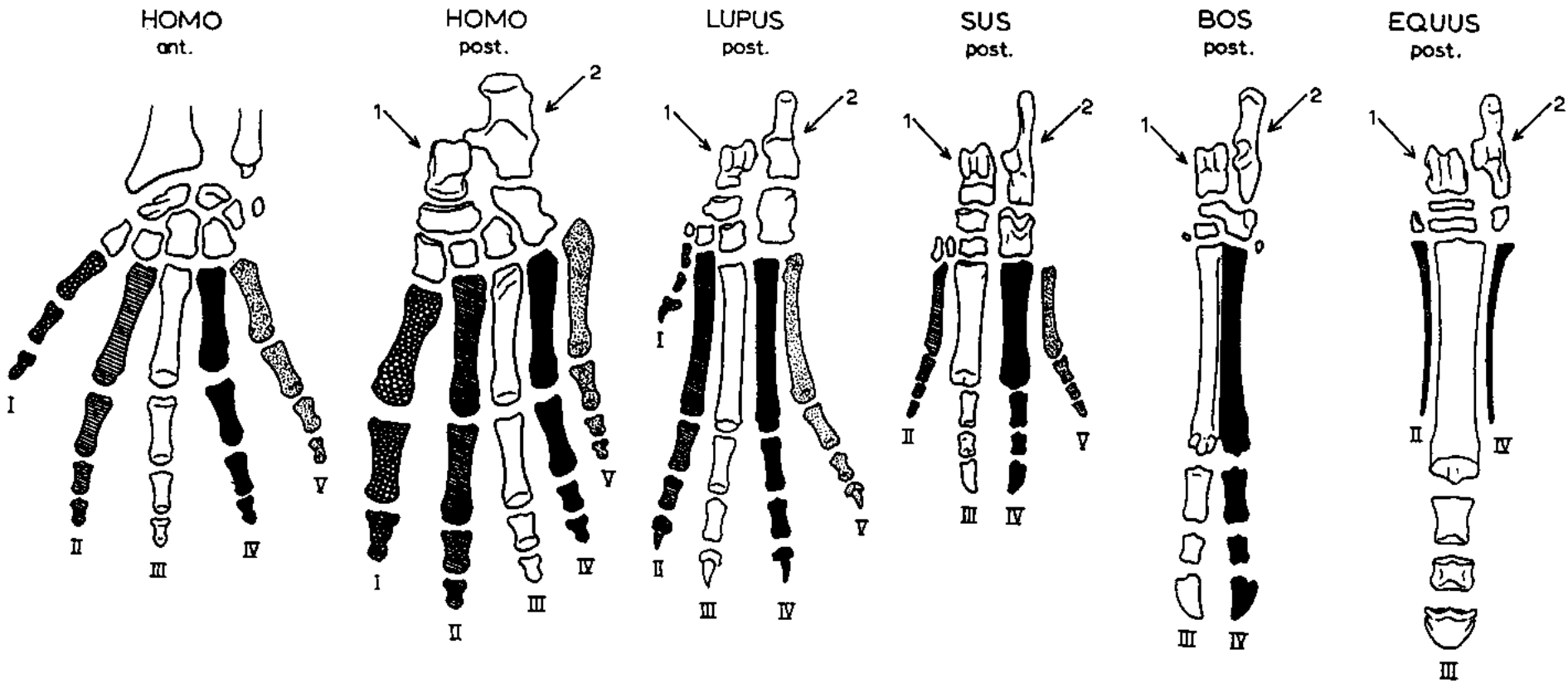
# Vřetenní kost (*radius*)



# Loketní kost (*ulna*)

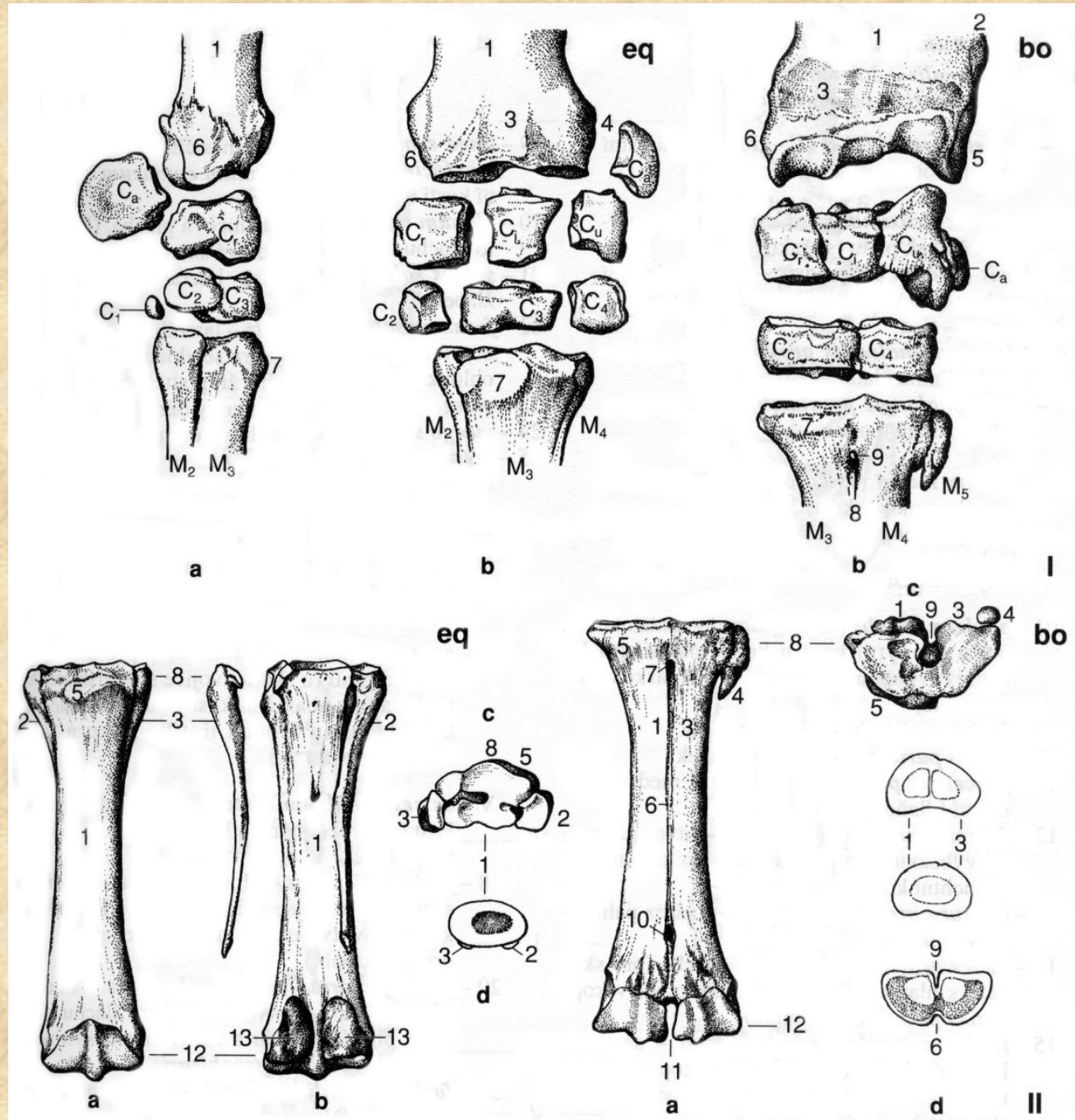


# Stavba Autopodia

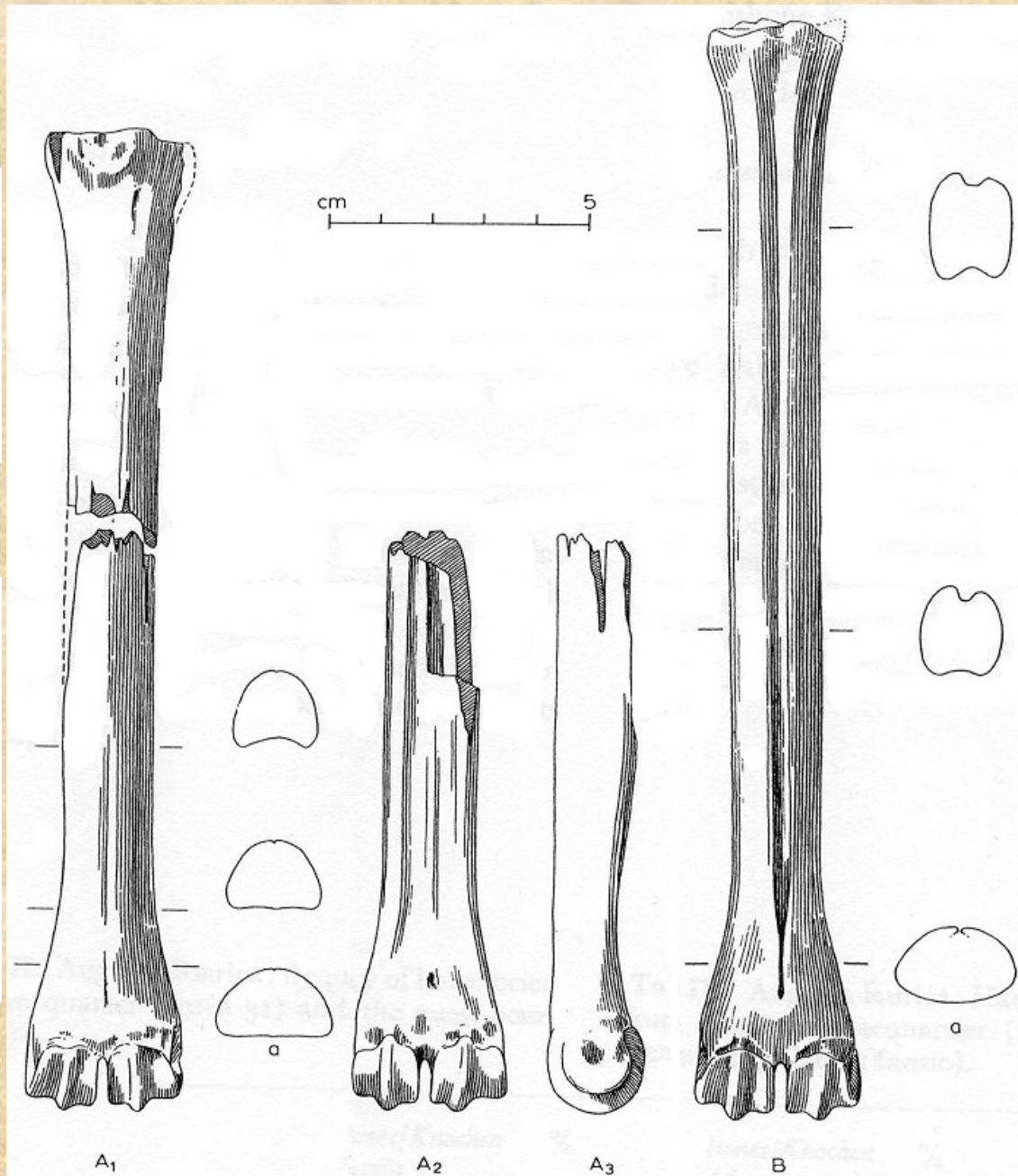
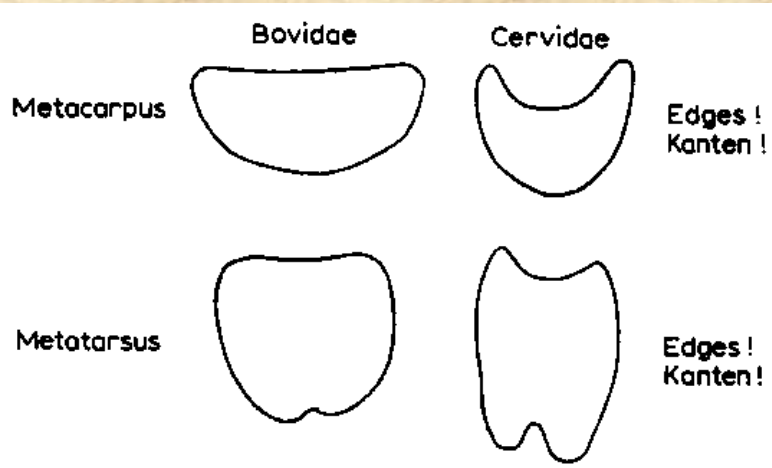
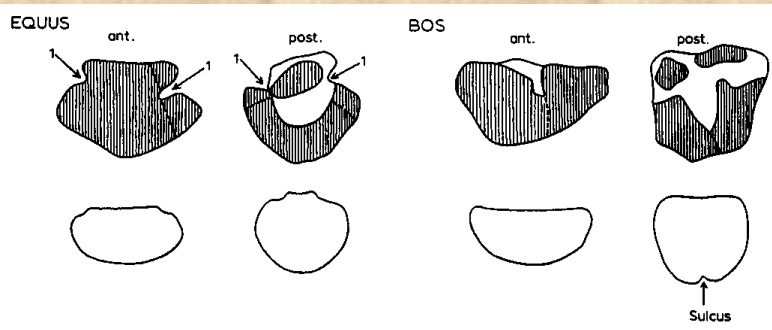




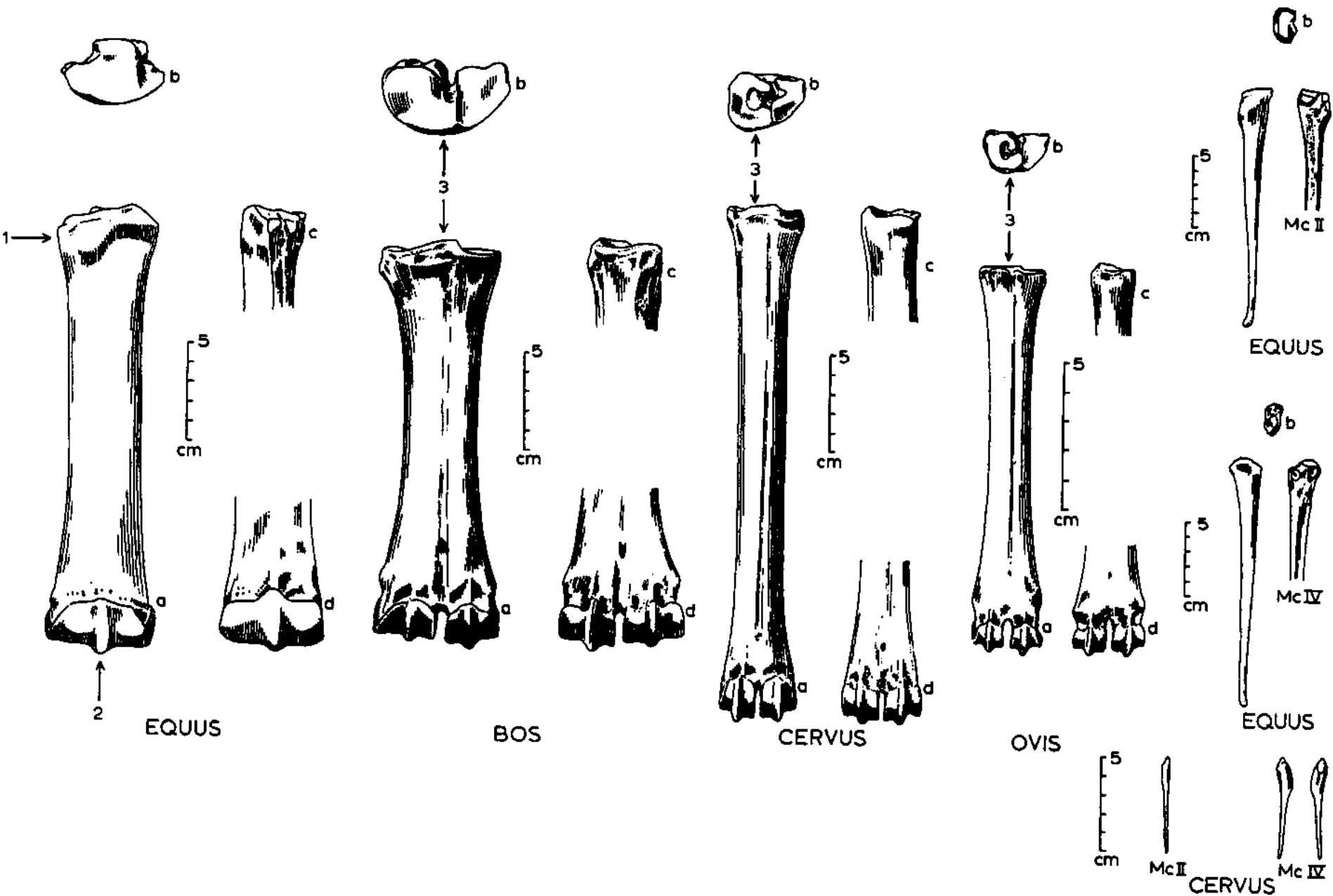
# Zápěstí (*carpus*)



# Rozdíl mezi záprstními a nártními kostmi

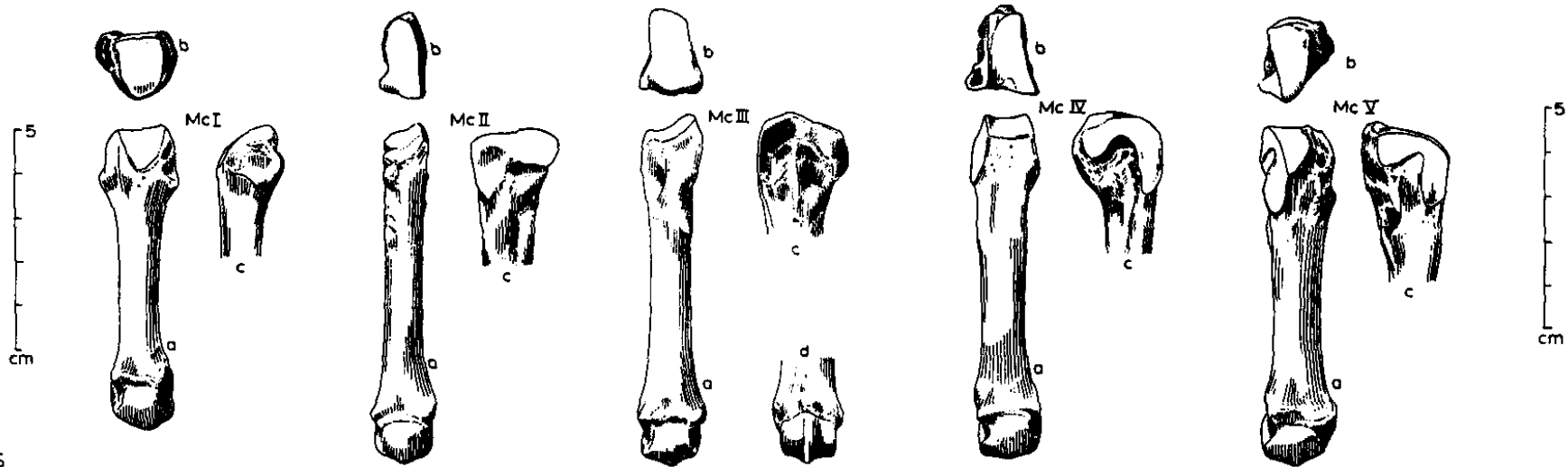
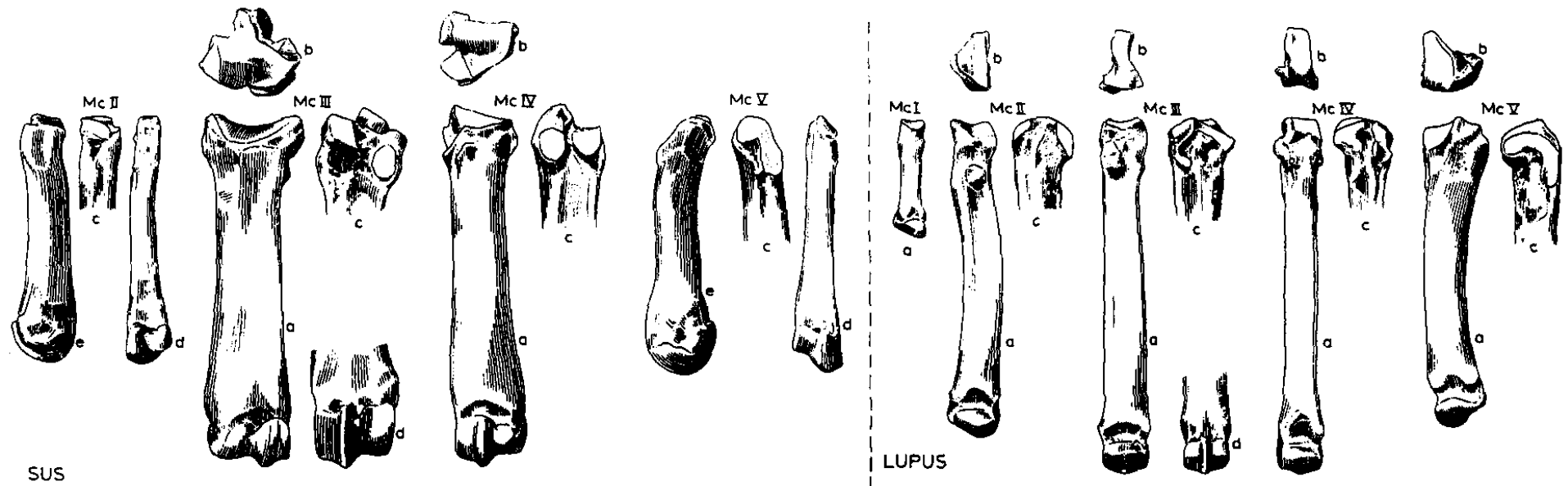


# Záprstní kosti (*metacarpalia*)



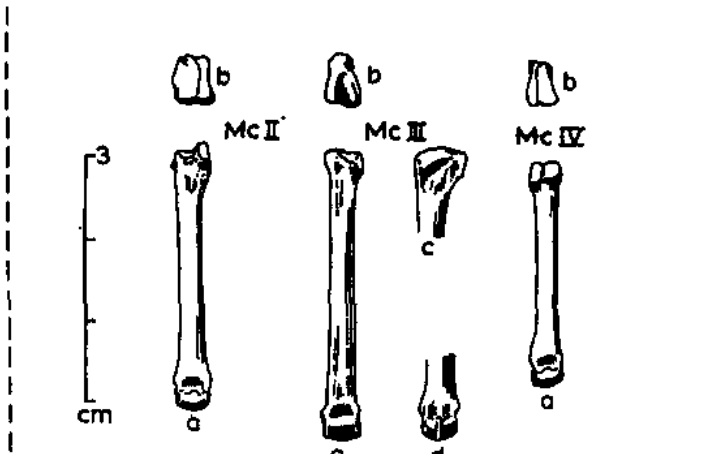
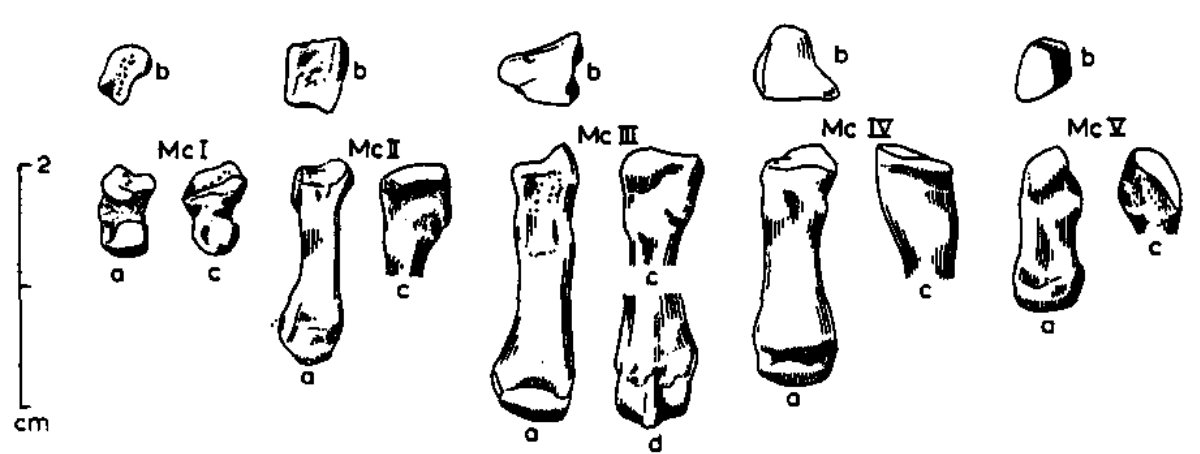


# Záprstní kosti (*metacarpalia*)

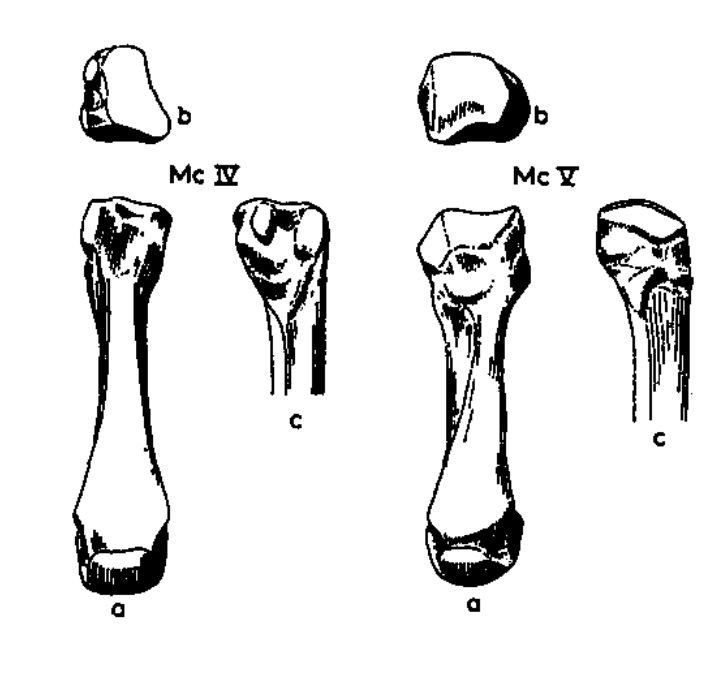
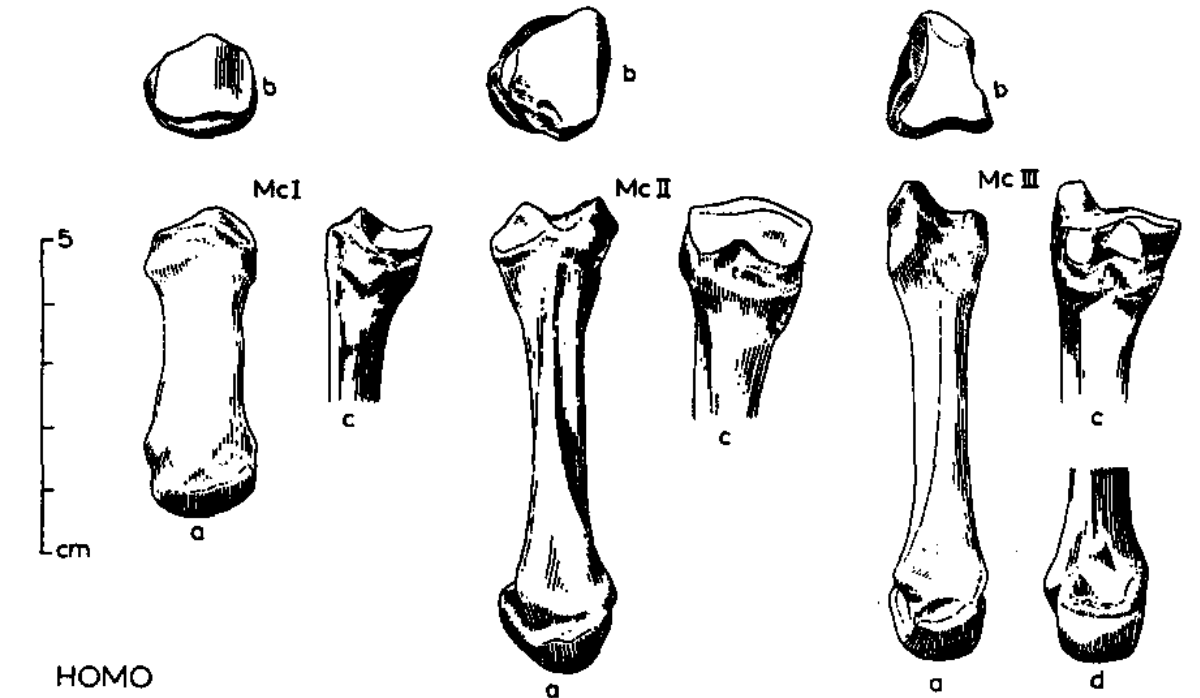


URSUS

# Záprstní kosti (*metacarpalia*)

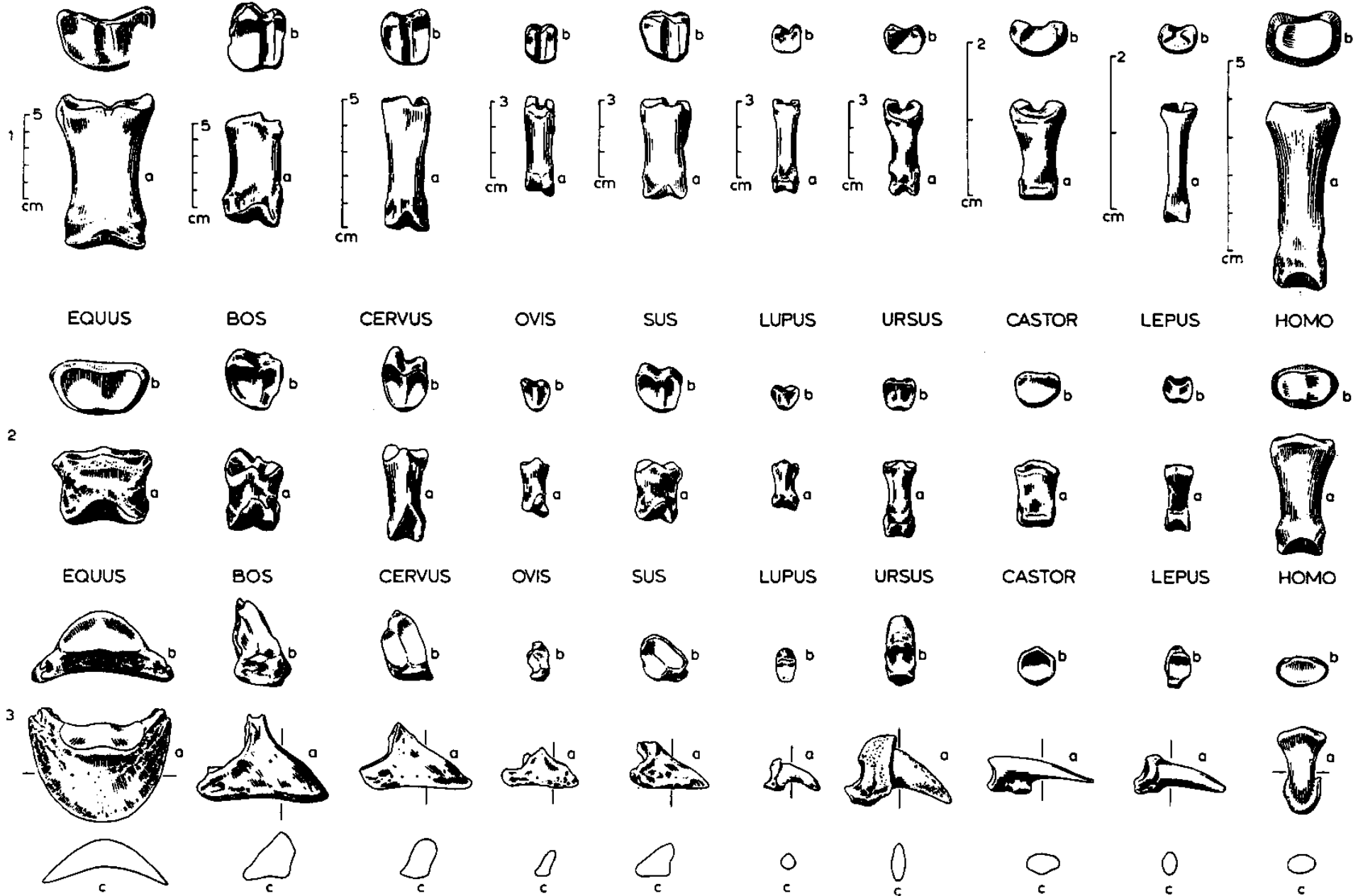


CASTOR LEPUS



HOMO

# Prstní články (*phalanges*)





**Děkuji za pozornost!**

